

Para el tratamiento  
del TDAH en adultos...

Descubra un  
tratamiento para el  
TDAH que ayuda a

controlar

los síntomas  
para su rutina

Consulte si **Qelbree** funciona  
para usted: es el primer  
medicamento no estimulante  
aprobado para el TDAH en adultos  
en 20 años.

#### INDICACIÓN

Qelbree es un medicamento de venta con receta que se usa para tratar el TDAH en pacientes de 6 años de edad o más.

#### INFORMACIÓN DE SEGURIDAD IMPORTANTE

**Qelbree puede aumentar los pensamientos y las acciones suicidas en niños y adultos con TDAH, especialmente en los primeros meses de tratamiento o cuando se cambia la dosis. Informe a su médico si usted o su hijo tienen (o si hay antecedentes familiares de) pensamientos o acciones suicidas antes de comenzar a tomar Qelbree. Monitoree su estado de ánimo, conductas, pensamientos y sentimientos, o los de su hijo, durante el tratamiento con Qelbree. Informe de inmediato cualquier cambio nuevo o repentino de estos síntomas.**

Abreviatura: TDAH, trastorno por déficit de atención e hiperactividad.

Consulte toda la información de seguridad importante en la página 9.

Todas las fotos de este folleto  
son retratos de pacientes.

**Qelbree**<sup>®</sup> ONCE-A-DAY  
viloxazine  
extended-release capsules  
100 mg 150 mg 200 mg

Para el tratamiento del TDAH en adultos...



### INFORMACIÓN DE SEGURIDAD IMPORTANTE

**No debe tomar Qelbree si usted o su hijo:**

Toman un medicamento para la depresión llamado inhibidor de la monoaminoxidasa (IMAO) o haber dejado de tomar un IMAO en los últimos 14 días. Además, usted o su hijo deben evitar tomar alosetrón, duloxetina, ramelteón, tasimelteón, tizanidina y teofilina.

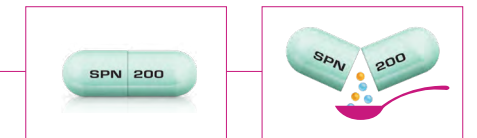
Consulte toda la información de seguridad importante en la página 9.

### Qelbree es un novedoso enfoque no estimulante en el TDAH:

- Aprobado por **primera vez** por la Administración de Alimentos y Medicamentos (Food and Drug Administration, FDA) para niños y adolescentes (de 6 a 17 años) en abril de 2021.
- **Primer** medicamento no estimulante aprobado para el TDAH en adultos en 20 años (abril de 2022).
- **Primer** medicamento no estimulante de su clase, que se toma solo una vez al día.

### La dosis diaria de Qelbree es flexible\*:

- Trague las cápsulas enteras.
- Abra y espolvoree todo el contenido de las cápsulas sobre una cucharada con alimentos blandos (pudín o compota de manzana): consuma toda la mezcla, sin masticar, dentro de los 15 minutos si se mezcla con pudín o dentro de las 2 horas si se mezcla con compota de manzana.



Las cápsulas que se muestran no son del tamaño real.

\*Su médico determinará la dosis en función de su respuesta al medicamento.

Qelbree se puede recetar y recargar de manera conveniente sin una nueva receta todos los meses.



¡Los pacientes con un seguro comercial pueden pagar tan solo \$20 por receta!†

†Se aplican términos y condiciones.

Abreviatura: FDA, Administración de Alimentos y Medicamentos.

**Qelbree** ONCE-A-DAY  
viloxazine  
extended-release capsules  
100 mg 150 mg 200 mg

Para el tratamiento  
del TDAH en adultos...



Ayúdeme a  
obtener

información

al compartir  
algunos detalles

#### INFORMACIÓN DE SEGURIDAD IMPORTANTE

**Qelbree puede aumentar la presión arterial y el ritmo cardiaco.**

Su médico o el médico de su hijo monitorearán estos signos vitales.

Consulte toda la información de seguridad importante en la página 9.

**Qelbree UNA VEZ AL DÍA** **Qelbree** es eficaz

Se ha demostrado que **Qelbree** reduce significativamente los puntajes de síntomas de TDAH en 4 estudios médicos de más de 1400 personas:

- 2 estudios en niños de 6 a 11 años (n=761)
- 1 estudio en adolescentes de 12 a 17 años (n=301)
- 1 estudio en adultos de 18 a 65 años (n=354)

En cada estudio, los participantes tomaron un fármaco activo (Qelbree una vez al día) o un fármaco inactivo (placebo). Cada estudio utilizó una escala de valoración del TDAH de 18 puntos apropiada para la edad para medir la mejora general de los puntajes de los síntomas desde el comienzo del estudio hasta el final.

**Qelbree**<sup>®</sup> ONCE-A-DAY  
viloxazine  
extended-release capsules  
100 mg 150 mg 200 mg

Para el tratamiento  
del TDAH en adultos...



Tengo la  
atención necesaria  
para que mis  
objetivos sean

alcanzables

Se ha demostrado que Qelbree **UNA VEZ AL DÍA** **Qelbree** reduce  
significativamente los síntomas de ADHD

Al reducir el impacto de los síntomas del TDAH, Qelbree puede ayudarle en su día a día como adulto que sufre complicaciones por su TDAH.

En el ensayo clínico de 6 semanas, los adultos que tomaron Qelbree cumplieron con el objetivo de una reducción significativa en los puntajes de síntomas de TDAH al final del estudio. Para algunos pacientes, Qelbree redujo los puntajes de los síntomas del TDAH ya en la semana 2.

#### INFORMACIÓN DE SEGURIDAD IMPORTANTE

**Qelbree puede provocar episodios maníacos en pacientes con trastorno bipolar.**

Informe a su médico si usted o su hijo presentan signos de manía.

Consulte toda la información de seguridad importante en la página 9.

**Qelbree**<sup>®</sup> ONCE-A-DAY  
viloxazine  
extended-release capsules  
100 mg 150 mg 200 mg

Para el tratamiento  
del TDAH en adultos...



### INFORMACIÓN DE SEGURIDAD IMPORTANTE

**Qelbree puede aumentar la presión arterial y el ritmo cardiaco.**  
Su médico o el médico de su hijo monitorearán estos signos vitales.

Consulte toda la información de seguridad importante en la página 9.

**Qelbree UNA VEZ AL DÍA** **Qelbree** demostró ser seguro\* en el estudio médico, con efectos secundarios manejables, cuando se toma según las indicaciones

\*Importante: Monitorear para detectar cambios en el estado de ánimo o la conducta. Su médico también debe monitorear los cambios en la presión arterial y el ritmo cardiaco.

#### Efectos secundarios más frecuentes en adultos

Efecto secundario	Placebo	Qelbree
Insomnio <sup>†</sup>	7%	<b>23%</b>
dolor de cabeza <sup>†</sup>	7%	<b>17%</b>
Cansancio	3%	<b>12%</b>
Náuseas	3%	<b>12%</b>
Disminución del apetito	3%	<b>10%</b>
Sequedad de boca	2%	<b>10%</b>
Somnolencia <sup>†</sup>	2%	<b>6%</b>
Estreñimiento	1%	<b>6%</b>

<sup>†</sup>Los siguientes términos se agruparon:

**Somnolencia:** somnolencia, letargo, sedación

**Dolor de cabeza:** cefalea, migraña, migraña con aura, dolor de cabeza tensional

**Insomnio:** insomnio inicial, insomnio, insomnio intermedio, sueño de mala calidad, trastorno del sueño, insomnio terminal

**Qelbree** ONCE-A-DAY  
viloxazine  
extended-release capsules  
100 mg 150 mg 200 mg

Para el tratamiento del TDAH en adultos...



El tratamiento con Qelbree fue

sostenible

en el estudio médico de 6 semanas

#### INFORMACIÓN DE SEGURIDAD IMPORTANTE

**Qelbree puede provocar episodios maníacos en pacientes con trastorno bipolar.**

Informe a su médico si usted o su hijo presentan signos de manía.

Consulte toda la información de seguridad importante en la página 9.

**Qelbree UNA VEZ AL DÍA** **Qelbree** demostró ser seguro\* en el estudio médico, y la mayoría de los pacientes permanecieron en tratamiento durante las 6 semanas

\*Importante: Monitorear para detectar cambios en el estado de ánimo o la conducta. Su médico también debe monitorear los cambios en la presión arterial y el ritmo cardíaco.

- El 9 % de los participantes que tomó **Qelbree** discontinuó el estudio médico debido a efectos secundarios frente al 5 % de los participantes que tomó el tratamiento inactivo (placebo).
- Es poco probable que **Qelbree** tenga interacciones negativas con estimulantes como el metilfenidato o la anfetamina.
- **Qelbree** no es una sustancia controlada y no tiene potencial de adicción conocido ni evidencia de abuso.

**Qelbree** ONCE-A-DAY  
viloxazine  
extended-release capsules  
100 mg 150 mg 200 mg

Para el tratamiento del TDAH en adultos...

El tratamiento con Qelbree es

*tolerable*

#### INFORMACIÓN DE SEGURIDAD IMPORTANTE

**No conduzca ni opere maquinaria pesada hasta que sepa cómo le afectará Qelbree a usted o a su hijo.** Qelbree puede hacer que usted o su hijo se sientan somnolientos o cansados.

Consulte toda la información de seguridad importante en la página 9.



#### Estamos aquí para apoyarlo

¿Tiene alguna pregunta? Encuentre un único punto de contacto con el servicio de asistencia de Supernus y obtenga ayuda con cualquiera de los siguientes puntos:

- Formas de ahorrar en Qelbree
- Acceso al medicamento
- Cobertura de seguro para Qelbree

Comuníquese con nosotros de lunes a viernes, de 8:30 AM a 6:30PM., HORA DEL ESTE

QelbreeQelbree.com—su destino para:



#### Ahorros:

Descargue una tarjeta de copago o escanee aquí:



#### Un consejo sobre el seguro:

Muchos planes de seguro ahora incluyen Qelbree. Algunos planes requieren información adicional de su médico antes de cubrir Qelbree. Esto a veces se denomina Autorización previa. Asegúrese de verificar que su médico o farmacéutico presenten toda la información necesaria a su compañía de seguros lo antes posible para que no se retrase la aprobación de su receta.



#### Inscríbese en Qelbree Insider para acceder a:

- Consejos para controlar el TDAH
- Recursos útiles
- Herramientas para ayudar a organizar su semana

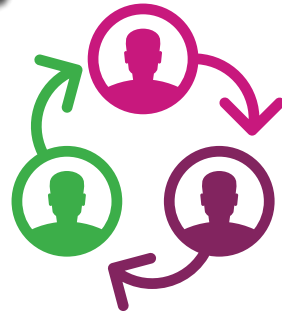
**Qelbree**<sup>®</sup> ONCE-A-DAY  
viloxazine  
extended-release capsules  
100 mg 150 mg 200 mg



Conéctese con la  
**Qelbree** comunidad de **Qelbree**

Educación y  
recursos que pueden

*compartirse*



Consulte toda la información de seguridad importante en la página 9.

¿Se está preparando para una  
conversación con su médico?



Visite [Qelbree.com](https://qelbree.com) para conocer los temas  
clave en los que debe centrarse antes de su  
próxima cita con el médico.

**Qelbree**<sup>®</sup> ONCE-A-DAY  
viloxazine  
extended-release capsules  
100 mg 150 mg 200 mg

## INDICACIÓN

Qelbree es un medicamento de venta con receta que se utiliza para tratar el TDAH en adultos y niños de 6 años o más.

## INFORMACIÓN DE SEGURIDAD IMPORTANTE

**Qelbree puede aumentar los pensamientos y las acciones suicidas en niños y adultos con TDAH, especialmente en los primeros meses de tratamiento o cuando se cambia la dosis. Informe a su médico si usted o su hijo tienen (o si hay antecedentes familiares de) pensamientos o acciones suicidas antes de comenzar a tomar Qelbree. Monitoree su estado de ánimo, conductas, pensamientos y sentimientos, o los de su hijo, durante el tratamiento con Qelbree. Informe de inmediato cualquier cambio nuevo o repentino de estos síntomas.**

### **No debe tomar Qelbree si usted o su hijo:**

Toman un medicamento para la depresión llamado inhibidor de la monoaminoxidasa (IMAO) o haber dejado de tomar un IMAO en los últimos 14 días. Además, usted o su hijo deben evitar tomar alosetrón, duloxetina, ramelteón, tasimelteón, tizanidina y teofilina.

**Qelbree puede aumentar la presión arterial y el ritmo cardíaco.** Su médico o el médico de su hijo monitorearán estos signos vitales.

**Qelbree puede provocar episodios maníacos en pacientes con trastorno bipolar.** Informe a su médico si usted o su hijo presentan signos de manía.

**No conduzca ni opere maquinaria pesada hasta que sepa cómo le afectará Qelbree a usted o a su hijo.** Qelbree puede hacer que usted o su hijo se sientan somnolientos o cansados.

**Los efectos secundarios más frecuentes de Qelbree** en pacientes de 6 a 17 años son somnolencia, falta de apetito, sensación de cansancio, náuseas, vómitos, problemas para dormir e irritabilidad, y en adultos, insomnio, dolor de cabeza, somnolencia, cansancio, náuseas, disminución del apetito, sequedad de boca y estreñimiento. Estos no son todos los posibles efectos secundarios de Qelbree.

Para el tratamiento  
del TDAH en adultos...

Control de los  
síntomas del  
TDAH que suele ser

*viabile*

Hable con su médico sobre  
Qelbree **una vez al día.**

#### INDICACIÓN

Qelbree es un medicamento de venta con receta que se usa para tratar el TDAH en pacientes de 6 años de edad o más.

#### INFORMACIÓN DE SEGURIDAD IMPORTANTE

**Qelbree puede aumentar los pensamientos y las acciones suicidas en niños y adultos con TDAH, especialmente en los primeros meses de tratamiento o cuando se cambia la dosis. Informe a su médico si usted o su hijo tienen (o si hay antecedentes familiares de) pensamientos o acciones suicidas antes de comenzar a tomar Qelbree. Monitoree su estado de ánimo, conductas, pensamientos y sentimientos, o los de su hijo, durante el tratamiento con Qelbree. Informe de inmediato cualquier cambio nuevo o repentino de estos síntomas.**

**Consulte toda la información de seguridad importante en la página 9.**



Qelbree es una marca comercial registrada de Supernus Pharmaceuticals, Inc. Todas las demás marcas comerciales son propiedad de sus respectivos propietarios. ©2023 Supernus Pharmaceuticals, Inc. Todos los derechos reservados. QBE.2023-0292-V2

**Qelbree** <sup>ONCE-A-DAY</sup>  
viloxazine  
extended-release capsules  
100 mg 150 mg 200 mg

## HIGHLIGHTS OF PRESCRIBING INFORMATION

These highlights do not include all the information needed to use QELBREE® safely and effectively. See full prescribing information for QELBREE®.

QELBREE® (viloxazine extended-release capsules), for oral use

Initial U.S. Approval: 2021

### WARNING: SUICIDAL THOUGHTS AND BEHAVIORS

See full prescribing information for complete boxed warning.

In clinical trials, higher rates of suicidal thoughts and behavior were reported in patients treated with Qelbree than in patients treated with placebo. Closely monitor for worsening and emergence of suicidal thoughts and behaviors (5.1).

### RECENT MAJOR CHANGES

Boxed Warning	4/2022
Indications and Usage (1)	4/2022
Dosage and Administration (2.2, 2.3)	4/2022
Warnings and Precautions (5.1, 5.2, 5.4)	4/2022

### INDICATIONS AND USAGE

Qelbree is a selective norepinephrine reuptake inhibitor indicated for the treatment of Attention Deficit Hyperactivity Disorder (ADHD) in adults and pediatric patients 6 years and older (1)

### DOSAGE AND ADMINISTRATION

- *Pediatric patients 6 to 11 years of age:* Recommended starting dosage is 100 mg once daily. May titrate in increments of 100 mg weekly to the maximum recommended dosage of 400 mg once daily (2.2)
- *Pediatric patients 12 to 17 years of age:* Recommended starting dosage is 200 mg once daily. May titrate after 1 week, by an increment of 200mg, to the maximum recommended dosage of 400 mg once daily (2.2)
- *Adult patients:* Recommended starting dosage is 200 mg once daily. May titrate in increments of 200 mg weekly, to maximum recommended dosage of 600 mg once daily (2.2)

- Capsules may be swallowed whole or opened and the entire contents sprinkled onto applesauce or pudding (2.3)
- **Severe Renal Impairment:** Initial dosage is 100 mg once daily. Titrate in weekly increments of 50 mg to 100 mg to a maximum recommended dosage of 200 mg once daily (2.4, 8.6)

### DOSAGE FORMS AND STRENGTHS

Extended-release capsules: 100 mg, 150 mg and 200 mg (3)

### CONTRAINDICATIONS

- Concomitant administration of monoamine oxidase inhibitors (MAOI), or dosing within 14 days after discontinuing an MAOI (4, 7.1)
- Concomitant administration of sensitive CYP1A2 substrates or CYP1A2 substrates with a narrow therapeutic range (4, 7.1)

### WARNINGS AND PRECAUTIONS

- **Blood Pressure and Heart Rate Increases:** Assess heart rate and blood pressure prior to initiating treatment, following increases in dosage, and periodically while on therapy (5.2)
- **Activation of Mania or Hypomania:** Screen patients for bipolar disorder (5.3)
- **Somnolence and Fatigue:** Advise patients to use caution when driving or operating hazardous machinery due to potential somnolence (including sedation and lethargy) and fatigue (5.4)

### ADVERSE REACTIONS

Most commonly observed adverse reactions ( $\geq 5\%$  and at least twice the rate of placebo) were:

*Pediatric patients 6 to 17 years of age:* somnolence, decreased appetite, fatigue, nausea, vomiting, insomnia, and irritability (6.1)  
*Adult patients:* insomnia, headache, somnolence, fatigue, nausea, decreased appetite, dry mouth and constipation (6.1)

To report SUSPECTED ADVERSE REACTIONS, contact Supernus Pharmaceuticals at 1-866-398-0833 or FDA at 1-800-FDA-1088 or [www.fda.gov/medwatch](http://www.fda.gov/medwatch).

### DRUG INTERACTIONS

*Moderate sensitive CYP1A2 substrates:* Not recommended for coadministration with Qelbree. Dose reduction may be warranted (7.1)

### USE IN SPECIFIC POPULATIONS

- **Pregnancy:** May cause maternal harm; discontinue when pregnancy is recognized (8.1)

See 17 for PATIENT COUNSELING INFORMATION and Medication Guide

Revised: 04/2022

## FULL PRESCRIBING INFORMATION: CONTENTS\*

### WARNING: SUICIDAL THOUGHTS AND BEHAVIORS

#### 1 INDICATIONS AND USAGE

#### 2 DOSAGE AND ADMINISTRATION

- 2.1 Important Considerations Prior to Initiating Treatment
- 2.2 Recommended Dosage
- 2.3 Administration Information
- 2.4 Dosage Recommendations in Patients with Renal Impairment

#### 3 DOSAGE FORMS AND STRENGTHS

#### 4 CONTRAINDICATIONS

#### 5 WARNINGS AND PRECAUTIONS

- 5.1 Suicidal Thoughts and Behaviors
- 5.2 Blood Pressure and Heart Rate Increases
- 5.3 Activation of Mania or Hypomania
- 5.4 Somnolence and Fatigue

#### 6 ADVERSE REACTIONS

- 6.1 Clinical Trials Experience

#### 7 DRUG INTERACTIONS

- 7.1 Drugs Having Clinically Important Drug Interactions with Qelbree

#### 8 USE IN SPECIFIC POPULATIONS

- 8.1 Pregnancy
- 8.2 Lactation
- 8.4 Pediatric Use
- 8.5 Geriatric Use
- 8.6 Renal Impairment

#### 10 OVERDOSAGE

#### 11 DESCRIPTION

#### 12 CLINICAL PHARMACOLOGY

- 12.1 Mechanism of Action
- 12.2 Pharmacodynamics
- 12.3 Pharmacokinetics

#### 13 NONCLINICAL TOXICOLOGY

- 13.1 Carcinogenesis, Mutagenesis, and Impairment of Fertility
- 13.2 Animal Toxicology and/or Pharmacology

#### 14 CLINICAL STUDIES

#### 16 HOW SUPPLIED/STORAGE AND HANDLING

#### 17 PATIENT COUNSELING INFORMATION

\* Sections or subsections omitted from the full prescribing information are not listed

## FULL PRESCRIBING INFORMATION

### WARNING: SUICIDAL THOUGHTS AND BEHAVIORS

In clinical studies, higher rates of suicidal thoughts and behavior were reported in patients with ADHD treated with Qelbree than in patients treated with placebo. Closely monitor all Qelbree-treated patients for clinical worsening, and for emergence of suicidal thoughts and behaviors [see *Warnings and Precautions (5.1)*].

#### 1 INDICATIONS AND USAGE

Qelbree is indicated for the treatment of Attention-Deficit Hyperactivity Disorder (ADHD) in adults and pediatric patients 6 years and older.

#### 2 DOSAGE AND ADMINISTRATION

##### 2.1 Important Considerations Prior to Initiating Treatment

- Assess heart rate and blood pressure prior to initiating treatment with Qelbree, following increases in dosage, and periodically while on therapy [see *Warnings and Precautions (5.2)*].

- Prior to initiating treatment with Qelbree, screen patients for a personal or family history of suicide, bipolar disorder, and depression [see *Warnings and Precautions (5.3)*].

#### 2.2 Recommended Dosage

##### Pediatric patients

The recommended starting dosage for pediatric patients 6 to 11 years of age is 100 mg orally once daily. Dosage may be titrated in increments of 100 mg at weekly intervals to the maximum recommended dosage of 400 mg once daily, depending on response and tolerability.

The recommended starting dosage for pediatric patients 12 to 17 years of age is 200 mg orally once daily. After 1 week, dosage may be titrated by an increment of 200 mg to the maximum recommended dosage of 400 mg once daily, depending on response and tolerability.

##### Adult patients

The recommended starting dosage for adults is 200 mg orally once daily. Dosage may be titrated in increments of 200 mg weekly to the maximum recommended dosage of 600 mg once daily, depending on response and tolerability.

Pharmacological treatment of ADHD may be needed for extended periods. Periodically reevaluate the long-term use of Qelbree and adjust dosage as needed.

##### 2.3 Administration Information

Administer Qelbree orally with or without food [see *Clinical Pharmacology (12.3)*]. Do not cut, crush, or chew the capsules.

Swallow Qelbree capsules whole, or open the capsule and sprinkle the entire contents over a teaspoonful or tablespoonful of pudding or applesauce. Consume the food mixture in its entirety, without chewing, within 15 minutes for pudding, or within 2 hours for applesauce; do not store for future use.

#### 2.4 Dosage Recommendations in Patients with Renal Impairment

In patients with severe renal impairment (eGFR < 30 mL/min/1.73m<sup>2</sup>), the recommended starting dosage is 100 mg once daily. Dosage may be titrated in weekly increments of 50 to 100 mg once daily, to a maximum recommended dosage of 200 mg once daily.

No dosage adjustment is recommended in patients with mild to moderate (eGFR of 30 to 89 mL/min/1.73m<sup>2</sup>) renal impairment [see Use in Specific Populations (8.6)].

#### 3 DOSAGE FORMS AND STRENGTHS

Qelbree (viloxazine extended-release capsules) are available as:  
 100 mg: yellow opaque body and cap (printed "SPN" on the cap, "100" on the body)  
 150 mg: lavender opaque body and cap (printed "SPN" on the cap, "150" on the body)  
 200 mg: light green opaque body and cap (printed "SPN" on the cap, "200" on the body)

#### 4 CONTRAINDICATIONS

Qelbree is contraindicated in patients:

- receiving concomitant treatment with monoamine oxidase inhibitors (MAOI), or within 14 days following discontinuing an MAOI, because of an increased risk of hypertensive crisis [see Drug Interactions (7.1)].
- receiving concomitant administration of sensitive CYP1A2 substrates or CYP1A2 substrates with a narrow therapeutic range [see Drug Interactions (7.1)].

#### 5 WARNINGS AND PRECAUTIONS

##### 5.1 Suicidal Thoughts and Behaviors

Higher rates of suicidal thoughts and behaviors were reported in pediatric and adult patients with ADHD treated with Qelbree than in patients treated with placebo.

Among 1019 pediatric patients exposed to Qelbree 100 mg to 400 mg in short-term trials, a total of nine patients (0.9%) reported suicidal ideation (N=6), behavior (N=1) or both (N=2). Eight patients reported suicidal ideation or behavior on the Columbia Suicide Severity Rating Scale (C-SSRS), a validated scale that assesses suicide risk. An additional patient treated with Qelbree reported suicidal behavior during the clinical trials, but did not report it on the C-SSRS. Among 463 patients treated with placebo in these studies, two patients (0.4%) reported suicidal ideation on the C-SSRS. No patients treated with placebo reported suicidal behavior. No completed suicides occurred in these trials.

Among 189 adults treated with Qelbree, a total of three patients (1.6%) reported suicidal ideation on the C-SSRS, versus 0 of 183 adults treated with placebo. No adults treated with either Qelbree or placebo reported suicidal behavior on the C-SSRS in the study. No attempted or completed suicides occurred in the trial.

Patients treated with Qelbree had higher rates of insomnia and irritability [see Adverse Reactions (6.1)]. Although a causal link between the emergence of insomnia and irritability and the emergence of suicidal impulses has not been established, there is a concern that these and other symptoms such as depressed mood, anxiety, agitation, akathisia, mania, hypomania, panic attacks, impulsive behavior, and aggression may represent precursors to emerging suicidal ideation or behavior. Thus, patients being treated with Qelbree should be observed for the emergence of precursor symptoms.

Closely monitor all Qelbree-treated patients for clinical worsening and emergence of suicidal thoughts and behaviors, especially during the initial few months of drug therapy, and at times of dosage changes. Consider changing the therapeutic regimen, including possibly discontinuing Qelbree, in patients who are experiencing emergent suicidal thoughts and behaviors or symptoms that might be precursors to emerging suicidal ideation or behavior, especially if these symptoms are severe or abrupt in onset, or were not part of the patient's presenting symptoms. Advise family members or caregivers of patients to monitor for the emergence of suicidal ideation or behavior, and to report such symptoms immediately to the healthcare provider.

##### 5.2 Blood Pressure and Heart Rate Increases

Qelbree can cause an increase in heart rate and diastolic blood pressure.

###### Pediatric Patients

In a clinical study in pediatric patients 6 to 11 years of age, 34/154 (22%) of patients treated with Qelbree 100 mg daily had a  $\geq 20$  beat per minute (bpm) increase in heart rate at any time point in the clinical trial, compared to 15/159 (9%) of patients who received placebo. This finding was observed in 84/268 (31%) who received the 200 mg daily dosage, compared to 39/262 (15%) of patients in the placebo group, and in 28/100 (28%) of patients who received the 400 mg daily dosage, compared to 24/103 (23%) of patients who received placebo.

In a clinical study in pediatric patients 12 to 17 years of age, 22/99 (22%) of patients treated with Qelbree 200 mg daily had a  $\geq 20$  bpm increase in heart rate at any time point in the clinical trial, compared to 15/104 (14%) of patients who received placebo. This finding was observed in 69/205 (34%) who received the 400 mg daily dosage, compared to 35/201 (17%) of patients in the placebo group. In pediatric patients 12 to 17 years of age, 52/205 (25%) of patients treated with Qelbree 400 mg daily had a  $\geq 15$  mmHg increase in diastolic blood pressure at any time in the clinical trial, compared to 26/201 (13%) of patients in the placebo group.

###### Adult Patients

In a clinical study in adult patients (18 to 60 years of age), 52/178 (29%) of patients treated daily with Qelbree (200 mg to 600 mg) had a  $\geq 20$  beat per minute (bpm) increase in heart rate at any time point in the clinical trial, compared to 23/181 (13%) of patients who received placebo. Of patients treated daily with Qelbree (200 to 600 mg), 23/178 (13%) had a  $\geq 15$  mmHg increase in diastolic blood pressure at any time in the clinical trial, compared to 16/181 (9%) of patients in the placebo group.

Assess heart rate and blood pressure prior to initiating treatment with Qelbree, following increases in dosage, and periodically while on therapy [see Dosage and Administration (2.1)].

##### 5.3 Activation of Mania or Hypomania

Noradrenergic drugs, such as Qelbree, may induce a manic or mixed episode in patients with bipolar disorder. Prior to initiating treatment with Qelbree, screen patients to determine if they are at risk for bipolar disorder; such screening should include a detailed psychiatric history, including a personal or family history of suicide, bipolar disorder, and depression [see Dosage and Administration (2.1)].

##### 5.4 Somnolence and Fatigue

Qelbree can cause somnolence and fatigue. In the short-term, placebo-controlled clinical trials in pediatric patients (6 to 17 years) with ADHD, somnolence (including lethargy and sedation) was reported in 16% of Qelbree-treated patients compared to 4% of placebo-treated patients. Fatigue was reported in 6% of Qelbree-treated patients, compared to 2% of placebo-treated patients [see Adverse Reactions (6.1)]. In adults, somnolence was reported in 6% of Qelbree-treated patients versus 2% in placebo-treated patients. Fatigue was reported in 12% of Qelbree-treated patients versus 3% of placebo-treated patients.

Patients should not perform activities requiring mental alertness, such as operating a motor vehicle or operating hazardous machinery until they know how they will be affected by Qelbree.

#### 6 ADVERSE REACTIONS

The following serious adverse reactions are described in other sections of the labeling:

- Suicidal Thoughts and Behaviors [see Warnings and Precautions (5.1)]
- Blood Pressure and Heart Rate Increases [see Warnings and Precautions (5.2)]
- Activation of Mania or Hypomania [see Warnings and Precautions (5.3)]
- Somnolence and Fatigue [see Warnings and Precautions (5.4)]

##### 6.1 Clinical Trials Experience

Because clinical trials are conducted under widely varying conditions, adverse reaction rates observed in the clinical trials of a drug cannot be directly compared to rates in the clinical trials of another drug and may not reflect the rates observed in practice.

The safety of Qelbree has been evaluated in 1118 pediatric patients (6 to 17 years of age) with ADHD exposed to one or more doses in short-term (6 to 8 week), randomized, double-blind, placebo-controlled trials. A total of 682 pediatric patients 6 to 17 years of age were treated for at least 6 months, and 347 pediatric patients 6 to 17 years of age for at least 12 months with Qelbree.

The safety of Qelbree has been evaluated in 189 adult patients (18 to 60 years of age) with ADHD exposed to one or more doses in a short-term (6 week), randomized, double-blind, placebo-controlled trial. A total of 277 adult patients with ADHD have been exposed to one or more doses of Qelbree. Eighty-four adult patients were treated for at least 6 months, and 22 adult patients for at least 12 months.

###### Pediatric Patients (6 to 17 Years of Age)

The data described below reflect exposure to Qelbree in 826 pediatric patients (6 to 17 years) who participated in randomized, double-blind, placebo-controlled trials with doses ranging from 100 mg to 400 mg. The population (N=826) was 65% male, 35% female, 54% White, 41% Black, 4% multiracial, and 1% other races.

**Adverse Reactions Leading to Discontinuation of Qelbree Treatment.** Approximately 3% (n=27) of the 826 patients receiving Qelbree in clinical studies discontinued treatment due to an adverse reaction. The adverse reactions most commonly associated with discontinuation of Qelbree were somnolence (n=5), nausea (n=3), headache (n=2), irritability (n=2), tachycardia (n=2), fatigue (n=2), and decreased appetite (n=2).

**Most Common Adverse Reactions (occurring at  $\geq 5\%$  and at least twice the placebo rate for any dose):** somnolence, decreased appetite, fatigue, nausea, vomiting, insomnia, and irritability. Table 1 lists adverse reactions that occurred in at least 2% of patients treated with Qelbree and more frequently in Qelbree-treated patients than in placebo-treated patients. Table 1 data represents pooled data from pediatric patients 6 to 17 years of age who were enrolled in randomized, placebo-controlled trials of Qelbree.

**Table 1. Adverse Reactions Reported in  $\geq 2\%$  of Pediatric Patients (6 to 17 Years of Age) Treated with Qelbree and at a Rate Greater than Placebo-Treated Patients in Placebo-Controlled ADHD Studies**

Body System Adverse Reaction	Placebo N=463 (%)	Qelbree			
		100mg N=154 (%)	200mg N=367 (%)	400mg N=305 (%)	All Qelbree N=826 (%)
<b>Nervous system disorders</b>					
Somnolence*	4	12	16	19	16
Headache <sup>†</sup>	7	10	11	11	11
<b>Metabolic and nutritional disorders</b>					
Decreased appetite	0.4	5	8	8	7
<b>Infections and infestations</b>					
Upper respiratory tract infection	6	5	7	8	7
<b>Body as a Whole - General disorders</b>					
Fatigue	2	4	5	9	6
Pyrexia	0.2	3	2	1	2
<b>Gastrointestinal system disorders</b>					
Abdominal Pain <sup>‡</sup>	4	3	6	7	5
Nausea	3	1	4	7	5
Vomiting	2	5	3	6	4
<b>Psychiatric disorders</b>					
Insomnia*	1	2	5	5	4
Irritability	1	3	2	5	3

\* The following terms were combined:

**Somnolence:** somnolence, lethargy, sedation

**Headache:** headache, migraine, migraine with aura, tension headache

**Upper respiratory tract infection:** nasopharyngitis, pharyngitis, sinusitis, upper respiratory tract infection, viral sinusitis, viral upper respiratory tract infection

**Abdominal pain:** abdominal discomfort, abdominal pain, abdominal pain lower, abdominal pain upper

**Insomnia:** initial insomnia, insomnia, middle insomnia, poor quality sleep, sleep disorder, terminal insomnia

**Effects on Weight:** In short-term, controlled studies (6 to 8 weeks), Qelbree-treated patients 6 to 11 years of age gained an average of 0.2 kg, compared to a gain of 1 kg in same-aged patients who received placebo. Qelbree-treated patients 12 to 17 years of age lost an average of 0.2 kg, compared to a weight gain of 1.5 kg in same-aged patients who received placebo. In a long-term open-label extension safety trial, 1097 patients received at least 1 dose of Qelbree. Among the 338 patients evaluated at 12 months, the mean change from baseline in weight-for-age z-score was -0.2 (standard deviation of 0.5). In the absence of a control group, it is unclear whether the weight change observed in the long-term open-label extension was attributable to the effect of Qelbree.

#### Adults

The data described below reflect exposure to Qelbree in 189 adults with ADHD who participated in the flexible-dose, randomized, double-blind, placebo-controlled trial with doses ranging from 200 mg to 600 mg. The population (N=189) was 56% male, 44% female, 81% White, 12% Black, 3% Asian, 3% other races and 1% multiracial.

**Adverse Reactions Leading to Discontinuation of Qelbree Treatment:** Approximately 9% of the 189 patients receiving Qelbree in clinical studies discontinued treatment due to an adverse reaction. The adverse reactions most commonly associated with discontinuation of Qelbree were fatigue (n=4), insomnia (n=3), constipation (n=3), and headache (n=2).

**Most Common Adverse Reactions (occurring at ≥5% and at least twice the placebo rate of Qelbree):** insomnia, headache, somnolence, fatigue, nausea, decreased appetite, dry mouth, and constipation.

Table 2 lists adverse reactions that occurred in at least 2% of patients treated with Qelbree and more frequently in Qelbree-treated patients than in placebo-treated patients. Table 2 represents data from adults with ADHD who were enrolled in a flexible-dose, randomized, placebo-controlled trial of Qelbree at doses of 200 mg to 600 mg.

**Table 2. Adverse Reactions Reported in ≥2% of Adults Treated with Qelbree and at a Rate Greater than Placebo-Treated Patients in a Flexible-Dose Placebo-Controlled ADHD Study**

Body System Adverse Reaction	Placebo N=183 (%)	Qelbree (200 mg to 600 mg) N=189 (%)
<b>Psychiatric disorders</b>		
Insomnia	7	23
Irritability	3	4
<b>Nervous system disorders</b>		
Headache	7	17
Somnolence	2	6
Dizziness	2	4
<b>Gastrointestinal system disorders</b>		
Nausea	3	12
Dry mouth	2	10
Constipation	1	6
Vomiting	1	4
Gastroesophageal reflux disease	1	2
<b>Body as a Whole - General disorders</b>		
Fatigue	3	12
<b>Metabolic and nutritional disorders</b>		
Decreased appetite	3	10
<b>Cardiac Disorders</b>		
Tachycardia	1	4

\* The following terms were combined:

**Somnolence:** somnolence, lethargy, sedation

**Headache:** headache, migraine, migraine with aura, tension headache

**Insomnia:** initial insomnia, insomnia, middle insomnia, poor quality sleep, sleep disorder, terminal insomnia

## 7 DRUG INTERACTIONS

### 7.1 Drugs Having Clinically Important Drug Interactions with Qelbree

**Table 3: Clinically Important Drug Interactions with Qelbree**

<b>Monoamine Oxidase Inhibitors (MAOI)</b>	
Clinical Impact	Concomitant use of Qelbree with an MAOI may lead to a potentially life-threatening hypertensive crisis.
Intervention	Concomitant use of Qelbree with an MAOI or within 2 weeks after discontinuing an MAOI is contraindicated [see <i>Contraindications (4)</i> ].
<b>Sensitive CYP1A2 Substrates or CYP1A2 Substrates with a Narrow Therapeutic Range</b>	
Clinical Impact	Viloxazine is a strong CYP1A2 inhibitor. Concomitant use of viloxazine significantly increases the total exposure, but not peak exposure, of sensitive CYP1A2 substrates [see <i>Clinical Pharmacology (12.3)</i> ], which may increase the risk of adverse reactions associated with these CYP1A2 substrates.

**Table 3: Clinically Important Drug Interactions with Qelbree (continued)**

Intervention	Coadministration with Qelbree is contraindicated [see <i>Contraindications (4)</i> ].
<b>Moderate Sensitive CYP1A2 Substrate</b>	
Clinical Impact	Viloxazine is a strong CYP1A2 inhibitor. Concomitant use of viloxazine significantly increases the total, but not peak, exposure of sensitive CYP1A2 substrates [see <i>Clinical Pharmacology (12.3)</i> ], which may increase the risk of adverse reactions associated with these CYP1A2 substrates.
Intervention	Not recommended for coadministration with Qelbree. Dose reduction may be warranted if coadministered.
<b>CYP2D6 Substrates</b>	
Clinical Impact	Viloxazine is a weak inhibitor of CYP2D6, and increases the exposure of CYP2D6 substrates when coadministered [see <i>Clinical Pharmacology (12.3)</i> ].
Intervention	Monitor patients for adverse reactions and adjust dosages of CYP2D6 substrates, as clinically indicated.
<b>CYP3A4 Substrates</b>	
Clinical Impact	Viloxazine is a weak inhibitor of CYP3A4 which increases the exposure of CYP3A4 substrates when coadministered [see <i>Clinical Pharmacology (12.3)</i> ].
Intervention	Monitor patients for adverse reactions and adjust dosages of CYP3A4 substrates, as clinically indicated.

## 8 USE IN SPECIFIC POPULATIONS

### 8.1 Pregnancy

#### Pregnancy Exposure Registry

There is a pregnancy exposure registry that monitors pregnancy outcomes in women exposed to Qelbree during pregnancy. Healthcare providers are encouraged to register patients by calling the National Pregnancy Registry for Psychiatric Medications at 1-866-961-2388 or visiting online at [www.womenmentalhealth.org/preg](http://www.womenmentalhealth.org/preg).

#### Risk Summary

Based on findings from animal reproduction studies, viloxazine may cause maternal harm when used during pregnancy. Discontinue Qelbree when pregnancy is recognized unless the benefits of therapy outweigh the potential risk to the mother. Available data from case series with viloxazine use in pregnant women are insufficient to determine a drug-associated risk of major birth defects, miscarriage or adverse maternal outcomes.

In animal reproduction studies, oral administration of viloxazine during the period of organogenesis caused fetal toxicities and delayed fetal development in the rat and maternal toxicities in the rabbit at doses approximately equal to the maximum recommended human dose (MRHD) of 600 mg in adults, based on mg/m<sup>2</sup>. Oral administration of viloxazine to pregnant rats and mice during pregnancy and lactation caused maternal toxicities and deaths and fetal toxicities at doses equal to or less than the MRHD of 600 mg in adults, based on mg/m<sup>2</sup>, respectively (see *Data*). The estimated background risk of major birth defects and miscarriage for the indicated population is unknown. All pregnancies have a background risk of birth defect, loss, or other adverse outcomes. In the U.S. general population, the estimated background risk of major birth defects and miscarriage in clinically recognized pregnancies is 2 to 4% and 15 to 20%, respectively.

#### Data

##### Animal Data

Viloxazine was administered orally to pregnant rats during the period of organogenesis at doses of 13, 33, and 82 mg/kg/day. The high dose is approximately equal to the MRHD of 600 mg in adults, based on mg/m<sup>2</sup>. Viloxazine did not cause maternal toxicity up to the high dose. Viloxazine at the high dose increased early and late resorption, delayed fetal development, and possibly caused low incidences of fetal malformations or anomalies (craniorachischisis, missing cervical vertebrae, and morphological changes associated with hydranencephaly). The NOAEL for fetal toxicity and malformation is 33 mg/kg/day, which is less than the MRHD of 600 mg in adults, based on mg/m<sup>2</sup>.

Viloxazine was administered orally to pregnant rabbits during the period of organogenesis at doses of 43, 87, and 130 mg/kg/day, which are approximately 1, 3, and 4 times the MRHD of 600 mg in adults, based on mg/m<sup>2</sup>, respectively. Viloxazine decreased maternal body weight, weight gain, or food consumption at doses ≥ 87 mg/kg/day but did not cause fetal toxicity at doses up to 130 mg/kg/day. The NOAELs for maternal and fetal toxicity is 43 and 130 mg/kg/day, respectively, which is approximately 1 and 4 times the MRHD, based on mg/m<sup>2</sup>, respectively. Viloxazine was administered orally to pregnant rats during gestation and lactation at doses of 43, 87, and 217 mg/kg/day, which are less than, equal to, and 4 times the MRHD of 600 mg in adults, based on mg/m<sup>2</sup>, respectively. Viloxazine caused maternal toxicity of decreased body weight, weight gain, and food consumption at doses ≥ 87 mg/kg/day and maternal deaths near term at 217 mg/kg/day. At these maternally toxic doses, viloxazine caused lower live birth, decreased viability, and delayed growth and sexual maturation without affecting learning and memory in the offspring. The NOAEL for maternal and developmental toxicity is 43 mg/kg/day, which is less than the MRHD of 600 mg in adults, based on mg/m<sup>2</sup>.

Viloxazine was administered orally to pregnant mice during gestation and lactation at doses of 13, 33, and 82 mg/kg/day, which are less than the MRHD of 600 mg in adults, based on mg/m<sup>2</sup>. Viloxazine treatment at 82 mg/kg/day during the gestation period caused maternal deaths and decreased body weight in the offspring. The NOAEL for both maternal and developmental toxicity is 33 mg/kg/day, which is less than the MRHD of 600 mg in adults, based on mg/m<sup>2</sup>.

### 8.2 Lactation

#### Risk Summary

There are no data on the presence of viloxazine in human milk, the effects on the breastfed infant, or the effects on milk production. Viloxazine is likely present in rat milk. When a drug is present in animal milk, it is likely that the drug will be present in human milk.

The developmental and health benefits of breastfeeding should be considered along with the mother's clinical need for Qelbree and any potential adverse effects on the breastfed child from Qelbree or from the underlying maternal condition.

### 8.4 Pediatric Use

The safety and effectiveness of Qelbree in pediatric patients 6 to 17 years of age with ADHD have been established based on randomized, placebo-controlled studies in pediatric patients [see *Adverse Reactions (6.1)* and *Clinical Studies (14)*].

The safety and effectiveness of Qelbree have not been established in pediatric patients younger than 6 years old.

Patients treated with Qelbree should be monitored for suicidal thoughts and behavior [see *Warnings and Precautions* (5.1)], and for changes in weight [see *Adverse Reactions* (6.1)].

#### Juvenile Animal Toxicity Data

Viloxazine was administered orally to juvenile rats from postnatal day (PND) 23 through PND 79 at doses of 43, 130, and 217 mg/kg/day, which are approximately 1, 2, and 3 times the MRHD of 400 mg in children, based on mg/m<sup>2</sup>, respectively. Viloxazine decreased body weight, weight gain, and food consumption in both sexes at 217 mg/kg/day. Sexual maturation, reproductive capacity, and learning and memory were not affected. The NOAEL for juvenile toxicity is 130 mg/kg/day, which is approximately 2 times the MRHD of 400 mg in children, based on mg/m<sup>2</sup>.

#### 8.5 Geriatric Use

Clinical trials of Qelbree in the treatment of ADHD did not include sufficient numbers of patients aged 65 and older to determine whether or not they respond differently from younger patients.

#### 8.6 Renal Impairment

Dosage reduction is recommended in patients with severe (eGFR of < 30 mL/min/1.73m<sup>2</sup> [MDRD]) renal impairment [see *Dosage and Administration* (2.4)].

No dosage adjustment of Qelbree is recommended in patients with mild to moderate (eGFR of 30 to 89 mL/min/1.73m<sup>2</sup> [MDRD]) renal impairment.

The exposure of viloxazine increases in patients with renal impairment [see *Clinical Pharmacology* (12.3)].

### 10 OVERDOSAGE

#### Human Experience

The pre-market clinical trials with Qelbree do not provide information regarding symptoms of overdose.

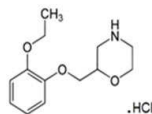
Literature reports from post marketing experience with immediate-release viloxazine include cases of overdose from 1000 mg to 6500 mg (1.7 to 10.8 times the maximum recommended daily dose). The most reported symptom was drowsiness. Impaired consciousness, diminished reflexes, and increased heart rate have also been reported.

#### Treatment and Management

There is no specific antidote for Qelbree overdose. Administer symptomatic and supportive treatment as appropriate. In case of overdose, consult a Certified Poison Control Center (1-800-222-1222 or www.poison.org).

### 11 DESCRIPTION

Qelbree contains viloxazine, a selective norepinephrine reuptake inhibitor, in the form of viloxazine hydrochloride which is (+)-2-[(2-ethoxyphenoxy)methyl]morpholine hydrochloride. The molecular formula is C<sub>13</sub>H<sub>20</sub>NO<sub>2</sub>Cl and its molecular weight is 273.8 (HCl salt) with the following structural formula:



Viloxazine hydrochloride is a white to off-white powder. Viloxazine hydrochloride is soluble in water, 0.1N HCl and aqueous solutions of pH 9.5 and lower. Viloxazine hydrochloride is sparingly soluble in methanol, very slightly soluble in acetonitrile, acetic acid and isopropyl alcohol, and practically insoluble in ethyl acetate.

Qelbree extended-release capsules are intended for oral administration. Each extended-release capsule contains 100 mg, 150 mg, and 200 mg of viloxazine free base equivalent to 115mg, 173mg, and 231mg, respectively, of viloxazine hydrochloride salt.

The inactive ingredients are: Ammonium hydroxide, black iron oxide, butyl alcohol, corn starch, ethylcellulose, FD&C Blue #1, FD&C Red #28, FD&C Yellow #5, FD&C Yellow #6, FD&C Yellow #10, gelatin, hypromellose, isopropyl alcohol, lactose monohydrate, medium chain triglycerides, oleic acid, polyethylene glycol, potassium hydroxide, propylene glycol, shellac, strong ammonia solution, sucrose, talc, triacetin, titanium dioxide.

### 12 CLINICAL PHARMACOLOGY

#### 12.1 Mechanism of Action

The mechanism of action of viloxazine in the treatment of ADHD is unclear; however, it is thought to be through inhibiting the reuptake of norepinephrine.

#### 12.2 Pharmacodynamics

Viloxazine binds to the norepinephrine transporter (NET, K<sub>i</sub> = 0.63 μM) and inhibits the reuptake of norepinephrine (IC<sub>50</sub> = 0.2 μM).

#### Cardiac Electrophysiology

At a dose 3 times the maximum recommended dose, Qelbree did not prolong the QT interval to any clinically relevant extent. There was no effect of Qelbree on the PR interval or QRS duration in healthy volunteers. However, nonclinical studies suggest the potential for Qelbree to inhibit cardiac sodium channels.

#### 12.3 Pharmacokinetics

Viloxazine C<sub>max</sub> and AUC increase proportionally over a dosage range from 100 mg to 600 mg once daily. Steady-state was reached after two days of once-daily administration, and no accumulation was observed.

#### Absorption

The relative bioavailability of viloxazine extended-release relative to an immediate-release formulation was about 88%. The median (range) time to peak plasma concentration of viloxazine (T<sub>max</sub>) was approximately 5 hours, with a range of 3 to 9 hours, following a single 200 mg dose.

#### Effect of Food

Administration of 200 mg viloxazine extended-release with a high-fat meal (800 to 1000 calories) decreased viloxazine C<sub>max</sub> and AUC by about 9% and 8%, respectively. Viloxazine T<sub>max</sub> increased by about 2 hours after administration with a high-fat meal. Sprinkling the contents of a capsule on applesauce decreased viloxazine C<sub>max</sub> and AUC by about 10% and 5%, respectively.

#### Distribution

Viloxazine is 76-82% bound to human plasma proteins over the blood concentration range of 0.5 mcg/mL to 10 mcg/mL.

#### Elimination

The mean (± SD) half-life of viloxazine was 7.02 ± (4.74) hours.

### Metabolism

Viloxazine is primarily metabolized by CYP2D6, UGT1A9, and UGT2B15. The major metabolite detected in plasma is 5-hydroxy-viloxazine glucuronide.

### Excretion

Renal excretion is the primary route of excretion of viloxazine. After administration of radiolabeled viloxazine, 90% of the dose was recovered in urine within the first 24 hours post-dose. Less than 1% of the dose is excreted in the feces.

### Specific Populations

#### Geriatric Patients

No studies were conducted to evaluate pharmacokinetics in the geriatric population.

#### Pediatric Patients

The estimated steady-state C<sub>max</sub> and AUC<sub>0-24</sub> of viloxazine and its major metabolite, at doses ranging from 200 mg to 400 mg, was approximately 130-250% and 60-140% higher in pediatric patients 6 to 11 and 12 to 17 years of age, respectively, compared to adults.

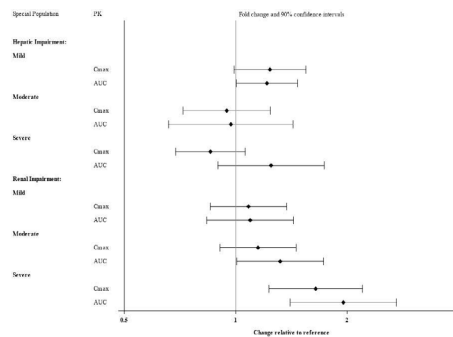
#### Male or Female Patients and Racial or Ethnic Groups

No clinically significant differences in the pharmacokinetics of viloxazine was observed based on race and sex.

#### Patients with Hepatic and Renal Impairment

Exposures of viloxazine in patients with hepatic and renal impairment are summarized in Figure 1 [see *Dosage and Administration* (2.4) and *Use in Specific Populations* (8.6)]

**Figure 1: Effect of Hepatic and Renal Impairment on Viloxazine Pharmacokinetics**



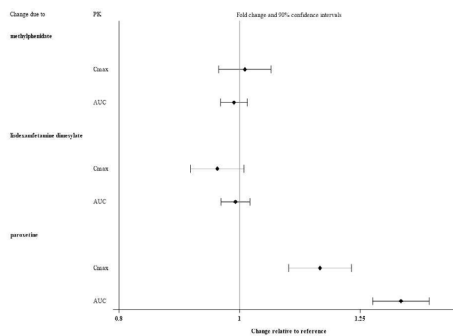
### CYP2D6 Metabolism

A multiple-dose study was conducted with Qelbree 900 mg once-daily in healthy volunteers to compare the effect of CYP2D6 poor metabolizers (PMs) and extensive metabolizers (EMs) on the PK of viloxazine. At steady state, viloxazine geometric means for C<sub>max</sub> and AUC<sub>0-24</sub> were 21% and 26%, respectively, higher in CYP2D6 PMs compared to EMs.

### Drug Interaction Studies

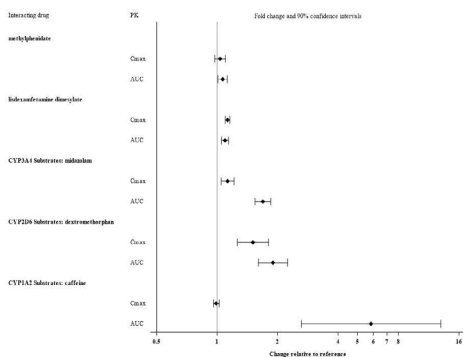
**Alcohol:** There was no significant effect on viloxazine C<sub>max</sub> and AUC when 200 mg viloxazine ER was administered with orange juice containing 4% and 20% alcohol. However, when administered with orange juice containing 40% alcohol, C<sub>max</sub> and AUC of viloxazine decreased by about 32% and 19%, respectively. The effect of other drugs on the pharmacokinetics of viloxazine is presented in Figure 2.

**Figure 2: Effects of Other Drugs on Viloxazine Pharmacokinetics**



The effect of viloxazine on the pharmacokinetics of other drugs is presented in Figure 3 [see *Drug Interactions* (7.1)].

**Figure 3: Effect of Viloxazine on the Pharmacokinetics of Other Drugs**



#### *In Vitro* Studies

Based on *in vitro* data, drugs that inhibit CYP isozymes, 1A2, 2B6, 2D6, 2C8, 2C9, 2C19, 2E1 and 3A4 are not expected to have significant impact on the pharmacokinetic profile of viloxazine. Viloxazine does not inhibit CYP2C8, 2C9 or 2C19 activities. Viloxazine is a reversible inhibitor of P450-1A2, 2B6, 2D6 and 3A4/5. Viloxazine is a potential inducer of CYP1A2 and CYP2B6. Viloxazine is not an inhibitor of P-gp, BCRP, MATE2-K, OATP1B1\*1a, and OATP1B3 transporters. Viloxazine appears to be a weak inhibitor of the MATE1. Viloxazine is not a substrate of either OATP1B1\*1a or OATP1B3 transporters.

### 13 NONCLINICAL TOXICOLOGY

#### 13.1 Carcinogenesis, Mutagenesis, and Impairment of Fertility

##### Carcinogenesis

Viloxazine did not increase the incidence of tumors in rats treated for 2 years at oral doses of 22, 43, and 87 mg/kg/day. The high dose of 87 mg/kg/day is approximately equal to the MRHD of 600 mg in adults, based on mg/m<sup>2</sup>.

Viloxazine did not increase the incidence of tumors in Tg.rasH2 mice treated for 26 weeks at oral doses of 4.3, 13, and 43 mg/kg/day.

##### Mutagenesis

Viloxazine was not genotoxic in a battery of genotoxicity tests. It was not mutagenic in the *in vitro* bacterial reverse mutation (Ames) assay or clastogenic in the *in vitro* mammalian chromosomal aberration assay or in the *in vivo* rat bone marrow micronucleus assay.

##### Impairment of Fertility

Viloxazine was orally administered to male and female rats prior to and throughout mating and continued until completion of the second littering at doses of 13, 33, and 82 mg/kg/day. Viloxazine did not affect male or female fertility parameters. The NOAEL for male and female fertility is 82 mg/kg/day, which is approximately equal to the MRHD of 600 mg in adults, based on mg/m<sup>2</sup>.

#### 13.2 Animal Toxicology and/or Pharmacology

In animal studies, viloxazine treatment caused dose-dependent convulsions at oral doses of ≥ 130, ≥ 173, and ≥ 39 mg/kg/day in the rat, mouse, and dog, respectively, which are approximately equal to or slightly higher than the MRHD of 600 mg in adults, based on mg/m<sup>2</sup>.

### 14 CLINICAL STUDIES

#### ADHD Studies in Pediatric Patients

The efficacy of Qelbree in the treatment of ADHD in pediatric patients 6 to 17 years of age was evaluated in three short-term, randomized, placebo-controlled monotherapy trials (Studies 1, 2, and 3).

Study 1 (NCT03247530) was a multicenter, randomized, double-blind, three-arm placebo-controlled, parallel group monotherapy trial in patients 6 to 11 years of age with ADHD. Total duration of treatment was 6 weeks, including a 1-week titration period (starting at 100 mg once daily) and 5-week maintenance phase. Patients were randomized to receive 100 mg, 200 mg, or placebo, given once daily as a single dose. The primary endpoint was the change from baseline to the end of study on the total score on the ADHD Rating Scale (ADHD-RS-5), an 18-question scale that assesses hyperactivity, impulsivity, and inattentive symptoms. Higher ADHD-RS-5 scores reflect more severe symptoms. The Clinical Global Impression-Improvement (CGI-I) score at the end of the study was a secondary endpoint.

A total of 477 patients were randomized in Study 1; 399 completed the study, and 78 discontinued. The change from baseline (reduction) in ADHD-RS-5 total score was statistically significantly greater in patients treated with Qelbree 100 mg or with Qelbree 200 mg than in patients on placebo (see Table 4). Compared with patients on placebo, a statistically significantly greater reduction (improvement) in CGI-I score at the end of the study was observed both in patients treated with Qelbree 100 mg and in patients treated with Qelbree 200 mg.

Study 2 (NCT03247543) was a multicenter, randomized, double-blind, three-arm, placebo-controlled, parallel-group monotherapy trial in patients 6 to 11 years of age with ADHD. Total duration of treatment was 8 weeks, including a 3-week titration period (starting at 100 mg once daily), and a 5-week maintenance phase. Patients were randomized to receive Qelbree 200 mg, Qelbree 400 mg, or placebo, given once daily as a single dose. The primary endpoint was the change from baseline to the end of study on the total score on the ADHD Rating Scale (ADHD-RS-5). The Clinical Global Impression-Improvement (CGI-I) score at the end of the study was a secondary endpoint.

A total of 313 patients were randomized in Study 2; 251 completed the study, and 62 discontinued. The change from baseline (reduction) in ADHD-RS-5 total score was statistically significantly greater in patients treated with Qelbree 200 mg or with Qelbree 400 mg than in patients on placebo (see Table 4). Compared with patients on placebo, a statistically significantly greater reduction (improvement) in CGI-I score at the end of the study was observed both in patients treated with Qelbree 200 mg and in patients treated with Qelbree 400 mg.

Study 3 (NCT03247517) was a multicenter, randomized, double-blind, three-arm, placebo-controlled, parallel-group monotherapy trial in patients 12 to 17 years of age with ADHD. Total duration of treatment was 6 weeks, including 1-week titration period (starting at 200mg once daily) and a 5-week maintenance phase. Patients were randomized to receive Qelbree 200 mg,

Qelbree 400 mg, or placebo, given once daily as a single dose. The primary endpoint was the change from baseline to the end of study on the total score on the ADHD Rating Scale (ADHD-RS-5). The Clinical Global Impression-Improvement (CGI-I) score at the end of the study was a secondary endpoint.

A total of 310 patients were randomized in Study 3; 266 completed and 44 discontinued. The change from baseline (reduction) in ADHD-RS-5 total score was statistically significantly greater in patients treated with Qelbree 200 mg or with Qelbree 400 mg than in patients on placebo (see Table 4). Compared with patients on placebo, a statistically significantly greater reduction (improvement) in CGI-I score at the end of the study was observed both in patients treated with Qelbree 200 mg and in patients treated with Qelbree 400 mg.

**Table 4. Primary Efficacy Results for Change from Baseline in ADHD-RS-5 Total Score in Pediatric Patients (6 to 17 years) with ADHD (Studies 1, 2, 3)**

Study Number (Age range)	Treatment Group	Primary Efficacy Measure: ADHD-RS-5 Total Score			
		n	Mean Baseline Score (SD)	LS Mean Change from Baseline (SE)	Placebo-subtracted Difference (95% CI)
Study 1 (6 to 11 years)	100 mg/day†	147	45.0 (6.53)	-16.6 (1.16)	-5.8 (-8.9, -2.6)
	200 mg/day†	158	44.0 (6.80)	-17.7 (1.12)	-6.9 (-10.0, -3.8)
	Placebo	155	43.6 (7.05)	-10.9 (1.14)	--
Study 2 (6 to 11 years)	200 mg/day†	107	43.8 (6.54)	-17.6 (1.43)	-6.0 (-10.0, -1.9)
	400 mg/day†	97	45.0 (6.55)	-17.5 (1.52)	-5.8 (-9.9, -1.7)
	Placebo	97	43.5 (6.79)	-11.7 (1.48)	--
Study 3 (12 to 17 years)	200 mg/day†	94	39.9 (7.22)	-16.0 (1.45)	-4.5 (-8.4, -0.6)
	400 mg/day†	103	39.4 (7.59)	-16.5 (1.38)	-5.1 (-8.9, -1.3)
	Placebo	104	40.5 (6.79)	-11.4 (1.37)	--

ADHD-RS-5 = Attention-Deficit/Hyperactivity Disorder Rating Scale 5<sup>th</sup> Edition; n: sample size; SD: standard deviation; SE: standard error; LS Mean: least-squares mean; CI: confidence interval, not adjusted for multiple comparisons

\* Difference (drug minus placebo) in least-squares mean change from baseline

† Doses that are statistically significantly superior to placebo after multiplicity adjustment

#### ADHD Study in Adults

The efficacy of Qelbree in the treatment of ADHD in adults 18 to 65 years of age was evaluated in a short-term, randomized, placebo-controlled, flexible-dose monotherapy trial (Study 4).

Study 4 (NCT04016779) was a multicenter, randomized, double-blind, placebo-controlled, flexible-dose, parallel-group monotherapy trial in adults 18 to 65 years of age with ADHD. Total duration of treatment was 6 weeks, starting at 200 mg once daily Week 1 and titrating up 400 mg once daily Week 2. Dose was adjusted by 200 mg per day once a week to a minimum of 200 mg once daily and maximum of 600 mg once daily thereafter. Patients were randomized to receive Qelbree (200 mg to 600 mg), or placebo, given once daily as a single dose. The primary endpoint was the change from baseline to the end of study on the total score on the ADHD Investigator Symptom Rating Scale (AISRS), an 18-item scale corresponding to 18 symptoms of ADHD. Higher AISRS scores reflect more severe symptoms. The change from baseline in the Clinical Global Impression-Severity of Illness (CGI-S) score at the end of the study was the key secondary endpoint.

A total of 374 adult patients were randomized in Study 4; 267 completed and 107 discontinued. The average dose at end of study was 504 mg per day. The change from baseline (reduction) in the AISRS Total score was statistically significantly greater in adults treated with Qelbree than in adults on placebo (see Table 5). In addition, the change from baseline (reduction) in the CGI-S score was statistically significantly greater in adults treated with Qelbree than in adults on placebo.

**Table 5. Primary Efficacy Results for Change from Baseline AISRS Total Score in Adults (18 to 60 years of age) with ADHD (Study 4)**

Study Number (Population)	Treatment Group	n	Mean Baseline Score (SD)	LS Mean Change from Baseline (SE)	Placebo-subtracted Difference (95% CI)
Study 4 (Adults)	Qelbree <sup>†</sup> (200 mg to 600 mg)	175	38.5 (6.56)	-15.5 (0.91)	-3.7 (-6.2, -1.2)
	Placebo	179	37.6 (6.62)	-11.7 (0.90)	--

AISRS: Attention-Deficit/Hyperactivity Disorder Investigator Symptom Rating Scale; n: sample size; SD: standard deviation; SE: standard error; LS Mean: least-squares mean; CI: confidence interval, not adjusted for multiple comparisons

\* Difference (drug minus placebo) in least-squares mean change from baseline

† Treatment is statistically significantly superior to placebo

### 16 HOW SUPPLIED/STORAGE AND HANDLING

#### How Supplied

Qelbree (viloxazine extended-release capsules) are available in the following strengths and colors:

100mg (yellow capsule printed with "SPN" on capsule cap and "100" on capsule body with edible black ink).

Bottles of 100 capsules	NDC 17772-131-01
Bottles of 90 capsules	NDC 17772-131-90
Bottles of 60 capsules	NDC 17772-131-60
Bottles of 30 capsules	NDC 17772-131-30

150mg (lavender capsule printed with "SPN" on capsule cap and "150" on capsule body with edible black ink).

Bottles of 100 capsules	NDC 17772-132-01
Bottles of 90 capsules	NDC 17772-132-90
Bottles of 60 capsules	NDC 17772-132-60
Bottles of 30 capsules	NDC 17772-132-30

200mg (light green capsule printed with "SPN" on capsule cap and "200" on capsule body with edible black ink).

Bottles of 100 capsules	NDC 17772-133-01
Bottles of 90 capsules	NDC 17772-133-90
Bottles of 60 capsules	NDC 17772-133-60
Bottles of 30 capsules	NDC 17772-133-30

**Storage and Handling**

Store at 20°C to 25°C (68°F to 77°F); excursions permitted between 15°C to 30°C (59°F to 86°F).

**17 PATIENT COUNSELING INFORMATION**

Advise the patient to read the FDA-approved patient labeling (Medication Guide).

Suicidal Thoughts and Behaviors

Advise patients and caregivers to monitor for the emergence of suicidal thoughts or behaviors or symptoms that might be precursors to emerging suicidal ideation or behavior, especially early during treatment and when the dosage is adjusted up or down. Instruct patients and caregivers to report such symptoms to the healthcare provider [see *Boxed Warning and Warnings and Precautions (5.1)*].

Concomitant Use with Monoamine Oxidase Inhibitors (MAOI)

Caution patients about the concomitant use of Qelbree and monoamine oxidase inhibitors (MAOI), or within 14 days after discontinuing an MAOI, because of an increased risk of hypertensive crisis [see *Contraindications (4) and Drug Interactions (7.1)*].

Blood Pressure and Heart Rate Increases

Instruct patients that Qelbree can cause elevations of their blood pressure and pulse rate and they should be monitored for such effects [see *Warnings and Precautions (5.2)*].

Activation of Mania/Hypomania

Advise patients and their caregivers to look for signs of activation of mania/hypomania [see *Warnings and Precautions (5.3)*].

Somnolence and Fatigue

Advise patients about the potential for somnolence (including sedation and lethargy) and fatigue. Advise patients to use caution when performing activities requiring mental alertness, such as driving a motor vehicle or operating hazardous machinery, until they know how they will be affected by Qelbree [see *Warnings and Precautions (5.4)*].

Effects on Weight

Advise patients and their caregivers that Qelbree may affect weight and that weight should be monitored while using Qelbree [see *Adverse Reactions (6.1)*].

Pregnancy

Advise patients that there is a pregnancy registry that monitors pregnancy outcomes in women exposed to Qelbree during pregnancy. Advise females of reproductive potential to inform their healthcare provider of a known or suspected pregnancy to discuss if Qelbree should be discontinued [see *Use in Specific Populations (8.1)*].

Administration Instructions

Advise patients to take the capsule whole or sprinkled over a teaspoonful or tablespoonful of applesauce or pudding and consume within 15 minutes when mixed with pudding or within 2 hours when mixed with applesauce. Do not cut, chew or crush the capsule [see *Dosage and Administration (2.3)*].

Qelbree is manufactured by: Catalent Pharma Solutions, LLC, 1100 Enterprise Drive Winchester, KY 40391.

Distributed by: Supernus Pharmaceuticals, Inc. Rockville, MD 20850 USA

Qelbree is a trademark of Supernus Pharmaceuticals, Inc.

RA-QEL-VX – YYYYMM-

© Supernus Pharmaceuticals Inc. 2022

**MEDICATION GUIDE**  
**QELBREE® (Kel' bree)**  
**(viloxazine extended-release capsules)**  
**for oral use**

**What is the most important information I should know about QELBREE?**

**QELBREE can cause serious side effects, including:**

- **Increased risk of suicidal thoughts or actions.** QELBREE may increase suicidal thoughts or actions in children and adults with attention deficit hyperactivity disorder (ADHD), **especially within the first few months of treatment or when the dose is changed.**

**How can I watch for and try to prevent suicidal thoughts and actions?**

- Pay close attention to any changes, especially sudden changes in mood, behavior, thoughts, or feelings or if you or your child develops suicidal thoughts or actions. This is very important when QELBREE treatment is started or when the dose is changed.
- Call your healthcare provider right away if you or your child has any new or sudden changes in mood, behavior, thoughts, or feelings, or if you or your child develops suicidal thoughts or actions.
- Keep all follow-up visits with your healthcare provider as scheduled. Call your healthcare provider between visits as needed, especially if you have concerns about symptoms.

**Call your healthcare provider or get emergency help right away if you or your child has any of the following symptoms, especially if they are new, worse, or worry you:**

- |   |   |
|---|---|
| ○ attempts to commit suicide                          | ○ thoughts about suicide or dying           |
| ○ new or worse depression                             | ○ new or worse anxiety                      |
| ○ feeling very agitated or restless                   | ○ panic attacks                             |
| ○ trouble sleeping (insomnia)                         | ○ new or worse irritability                 |
| ○ acting aggressive, being angry, or violent          | ○ acting on dangerous impulses              |
| ○ an extreme increase in activity and talking (mania) | ○ other unusual changes in behavior or mood |

See **“What are the possible side effects of QELBREE?”** for more information about side effects.

**What is QELBREE?**

QELBREE is a prescription medicine used to treat attention deficit hyperactivity disorder (ADHD) in adults and children 6 years of age and older.

It is not known if QELBREE is safe and effective in children less than 6 years of age.

**Do not take QELBREE if you or your child:**

- takes a medicine used to treat depression called a monoamine oxidase inhibitor (MAOI). Ask your healthcare provider or pharmacist if you are not sure if you or your child takes an MAOI.
- stopped taking an MAOI in the last 14 days.
- takes alosetron, duloxetine, ramelteon, tasimelteon, tizanidine, or theophylline.

**Before taking QELBREE, tell your healthcare provider about all your or your child's medical conditions, including if you or your child:**

- have, or have a family history of, suicide, bipolar disorder, depression, mania or hypomania
- have blood pressure or heart rate problems
- have severe kidney problems. Your healthcare provider may lower the dose of QELBREE.
- are pregnant or plan to become pregnant. QELBREE may cause harm to the mother when taken during pregnancy. You and your healthcare provider will decide if QELBREE should be taken during pregnancy.
  - Tell your healthcare provider right away if you or your child become pregnant or think they are pregnant during treatment with QELBREE.
  - There is a pregnancy registry for females who are exposed to QELBREE during pregnancy. The purpose of the registry is to collect information about the health of females exposed to QELBREE and their baby. If you become pregnant while taking QELBREE, talk to your healthcare provider about registering with the National Pregnancy Registry for Psychiatric Medications by calling 1-866-961-2388 or go to [www.womensmentalhealth.org/preg](http://www.womensmentalhealth.org/preg).
- are breastfeeding or plan to breastfeed. It is not known if QELBREE passes into breastmilk. Talk to your healthcare provider about the best way to feed the baby during treatment with QELBREE.

**Tell your healthcare provider about all the medicines you or your child take**, including prescription and over-the-counter medicines, vitamins, and herbal supplements.

QELBREE and other medicines may affect each other causing possible serious side effects.

Your healthcare provider will decide if QELBREE can be taken with other medicines.

**Especially tell your healthcare provider if you or your child take:**

- MAOIs
- alosetron
- duloxetine
- ramelteon
- tasimelteon
- tizanidine
- theophylline

Know the medicines you or your child takes. Keep a list of them and show it to your healthcare provider and pharmacist when you or your child get a new medicine.

**Do not start any new medicine during treatment with QELBREE without first talking to your healthcare provider.**

#### **How should I take QELBREE?**

- Take QELBREE exactly as your healthcare provider tells you to take it.
- Take QELBREE 1 time each day with or without food.
- Swallow QELBREE capsules whole. Do not cut, crush, or chew the capsules.
- If QELBREE capsules cannot be swallowed whole, the capsule may be opened and the entire contents sprinkled onto a teaspoonful or tablespoonful of pudding or applesauce.
- Swallow all the food mixture right away, **without chewing**, or within 15 minutes of mixing for pudding, or within 2 hours of mixing for applesauce.
  - **Do not** chew the food mixture.
  - **Do not** store food mixture.
- Talk to your healthcare provider about what you should do if you or your child misses a dose.
- If you or your child take too much QELBREE or overdoses, call your poison control center at 1-800-222-1222 right away, or go to the nearest emergency room.

#### **What should I avoid while taking QELBREE?**

Do not drive or operate heavy machinery until you know how QELBREE will affect you. QELBREE may cause you to feel sleepy or tired.

#### **What are the possible side effects of QELBREE?**

QELBREE can cause serious side effects, including:

- See “**What is the most important information I should know about QELBREE?**”
- **Increased blood pressure and heart rate.** Your healthcare provider should check you or your child’s blood pressure and heart rate before starting and during treatment with QELBREE.
- **Manic episodes.** Manic episodes may happen in people with bipolar disorder who take QELBREE. Symptoms may include:
  - greatly increased energy
  - racing thoughts
  - unusually grand ideas
  - talking more or faster than usual
  - severe trouble sleeping
  - reckless behavior
  - excessive happiness or irritability
- **Sleepiness and tiredness.** See “**What should I avoid while taking QELBREE?**”

**The most common side effects of QELBREE in children 6 to 17 years of age include:**

- sleepiness
- tiredness
- vomiting
- irritability
- decreased appetite
- nausea
- trouble sleeping

**The most common side effects of QELBREE in adults include:**

- insomnia
- sleepiness
- nausea
- dry mouth
- headache
- tiredness
- decreased appetite
- constipation

**Effects on weight.** Your healthcare provider should check your or your child's weight before starting and during treatment with **QELBREE**.

These are not all of the possible side effects of **QELBREE**.

Call your doctor for medical advice about side effects. You may report side effects to FDA at 1-800-FDA-1088.

**How should I store QELBREE?**

- Store **QELBREE** capsules at room temperature between 68°F to 77°F (20°C to 25°C).
- **Keep QELBREE and all medicines out of the reach of children.**

**General Information about the safe and effective use of QELBREE.**

Medicines are sometimes prescribed for purposes other than those listed in a Medication Guide. Do not take **QELBREE** for a condition for which it was not prescribed. Do not give **QELBREE** to other people, even if they have the same symptoms that you have. It may harm them. You can ask your healthcare provider or pharmacist for information about **QELBREE** that is written for health professionals.

**What are the ingredients in QELBREE?**

**Active ingredient:** viloxazine

**Inactive ingredients:** ammonium hydroxide, black iron oxide, butyl alcohol, corn starch, ethylcellulose, FD&C Blue #1, FD&C Red #28, FD&C Yellow #5, FD&C Yellow #6, FD&C Yellow #10, gelatin, hypromellose, isopropyl alcohol, lactose monohydrate, medium chain triglycerides, oleic acid, polyethylene glycol, potassium hydroxide, propylene glycol, shellac, strong ammonia solution, sucrose, talc, triacetin, titanium dioxide.

Manufactured by: Catalent Pharma Solutions, LLC, 1100 Enterprise Drive, Winchester KY 40391, USA

Distributed by: Supernus Pharmaceuticals, Inc., Rockville, MD USA 20850

© Supernus Pharmaceuticals Inc.

For more information, go to [www.supernus.com](http://www.supernus.com) or call 1-866-398-0833.

RA-QBE-MGVX-YYYYMM

This Medication Guide has been approved by the U.S. Food and Drug Administration.

Revised: 4/2022