

# Iliac bone lytic lesion

---

Ziv Haskal, MD  
University of Virginia

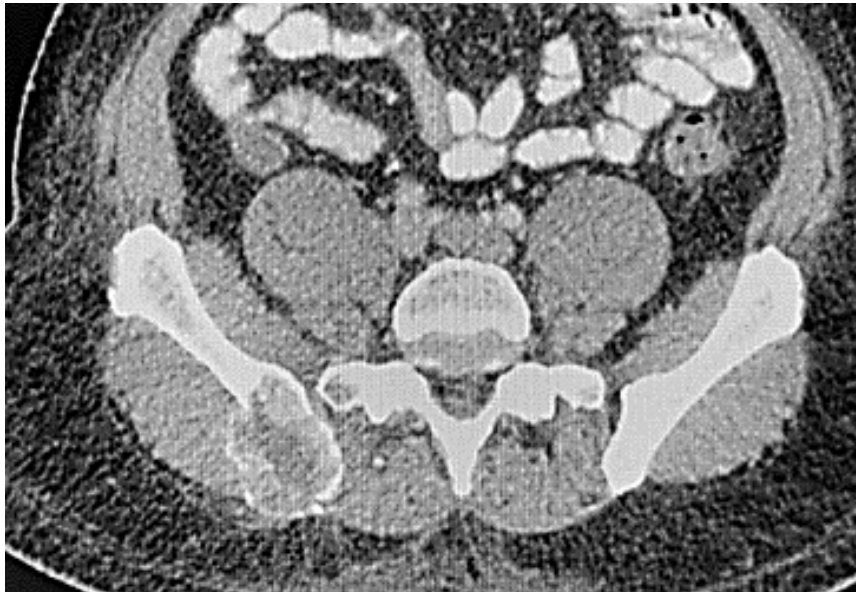
# Bone Ablation

51 yo male, metastatic follicular thyroid cancer. Spine and other mets treated with external beam radiation.

Continuously painful right pelvic met. Unable to sit, painful with walking, supine in bed.

Maximum EBRT

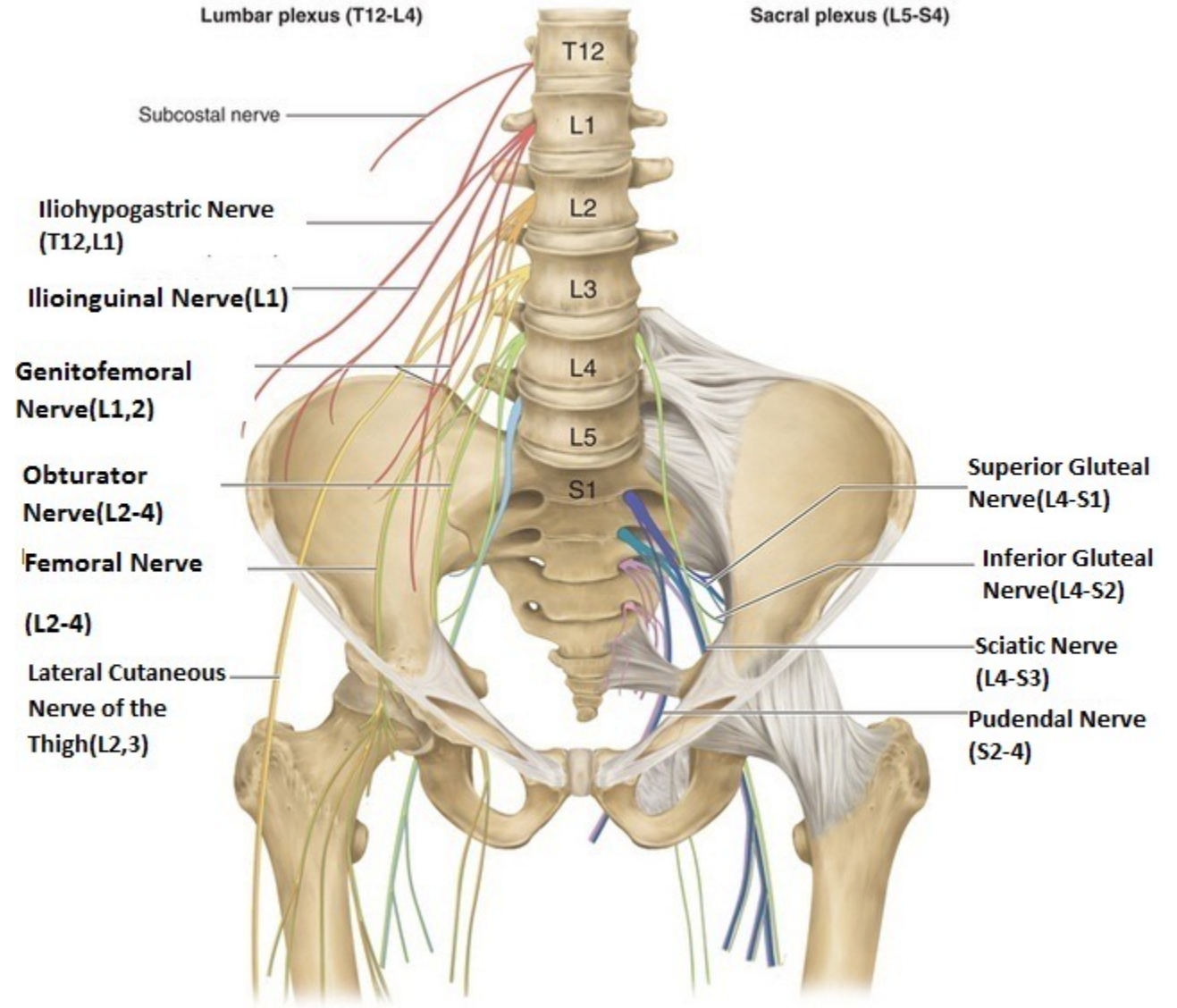
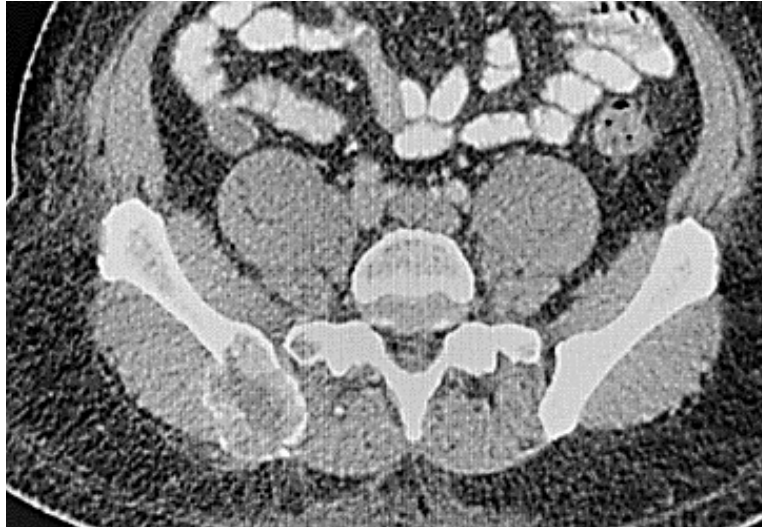
Tender to palpation

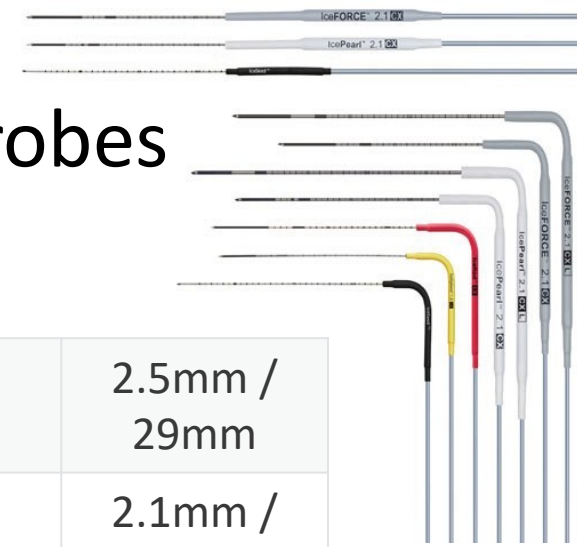


4.7CM



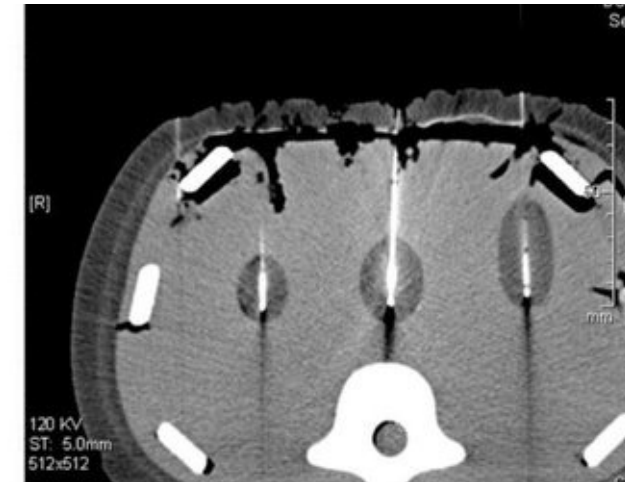
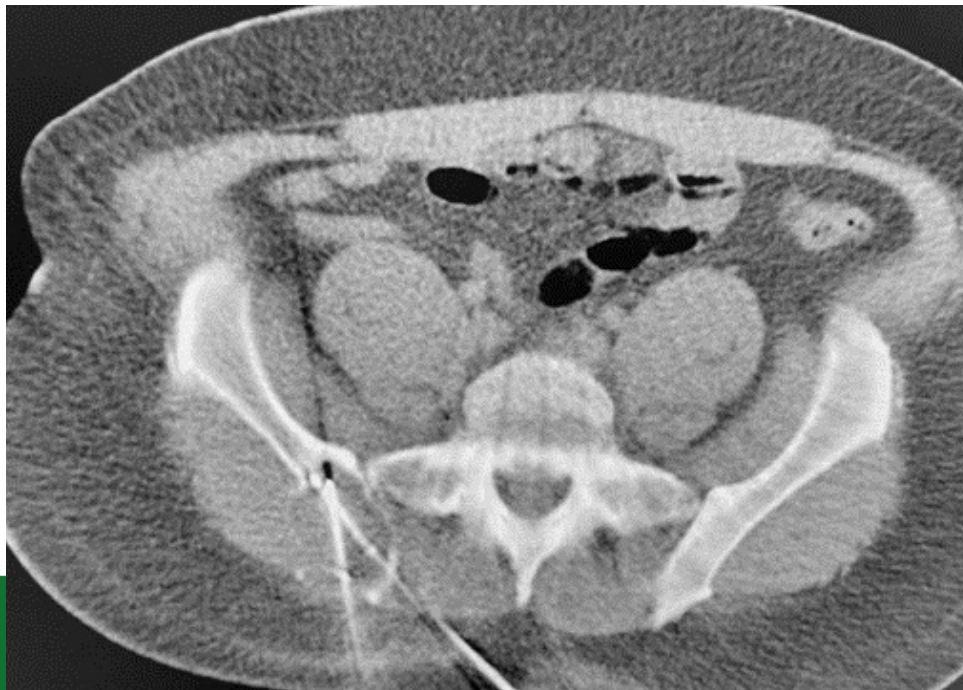




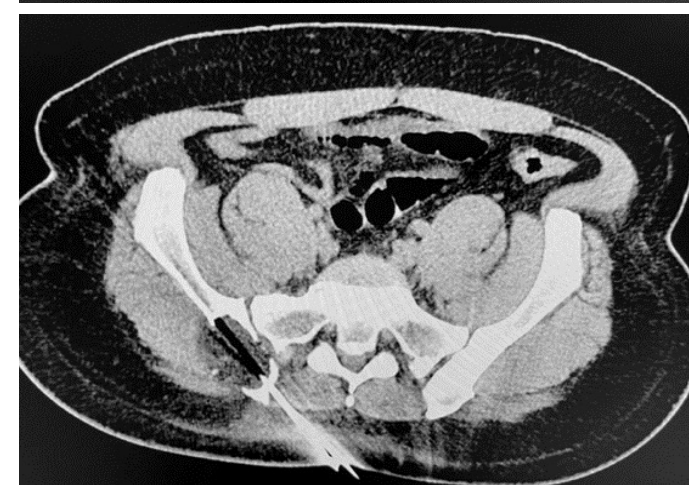
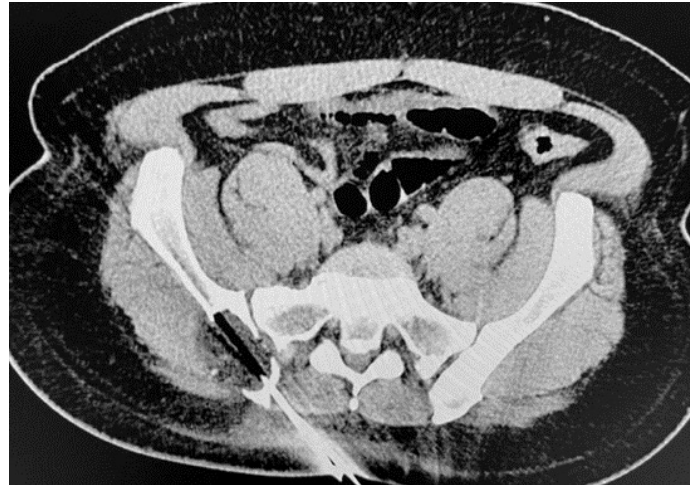
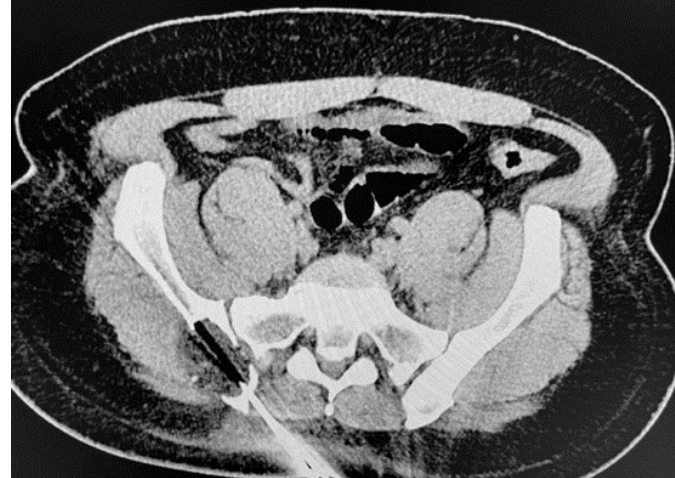


## 4 IceForce, 1 IcePearl cryoprobes

IceForce™ 2.1 CX 90°	FPRPR3602	17.5	14	2.5mm / 29mm
IcePearl™ 2.1 CX 90°	FPRPR3601	17.5	14	2.1mm / 13mm

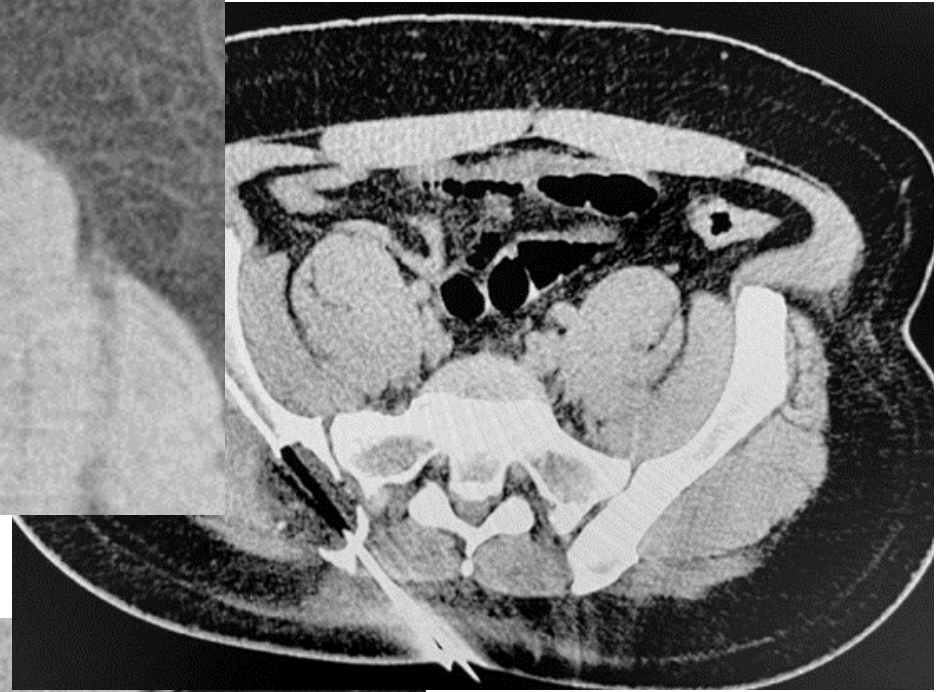






- Snapshot CT monitoring every 2 minutes to assess iceball size
- Goal of 5mm beyond tumor margin





# Post op

- Local pain relieved that evening
- Discharged next day with ibuprofen, acetaminophen (alternating); narcotic
- One week: worsened local pain, instructed re use of meds, improvement
- Four days later: worsened local pain, contralateral thigh pain, admitted to hospital for pain control, spine (had had EBRT in past to vertebral met) and pelvis MRI



- No new L/S mets.
- Ablation zone more extensive than expected  
No residual enhancing iliac mass  
At 3 weeks, all under control

