



IO in the COVID world: India



Dr Suyash Kulkarni

Prof. Interventional Radiology
Tata Memorial Centre, Mumbai, India



Disclosures

- THE AUTHOR HAS NO CONFLICT OF INTEREST



Global Statistics COVID -19

- As on 19th October 2020,
 - Globally - 39.9 Million cases / 1.11 Million deaths
 - India - 7.5 Million Cases / 114 Thousand deaths
 - Mumbai - 2,35 Lacs Cases / 9,958 Deaths



Tata Memorial Centre, Mumbai





Tata Memorial Centre, Mumbai

- The area **hotspot (red zone)** - commute difficult for patients and hospital staff.
- Total lockdown – 11 weeks
- 75,000 New cases / Year
- 70 % patients are from outside the city.



COVID 19 -Unique Challenge

- Risk of COVID-19 is increased by 3 times
- Risk of severe disease is increased by 5 times
- Risk of death is increased by 8 times (Al-Shamsi et al)

Covid outbreak hinders cancer treatment in hospitals

By Shailesh Menon, ET Bureau • Last Updated: Apr 07, 2020, 08:54 PM IST

SHARE FONT SIZE SAVE PRINT

Synopsis

Oncologists recommend deferment of non-critical surgeries, radiation and chemotherapy sessions taking into account the low immunity levels of cancer patients.



The Covid outbreak across the country has landed cancer patients in grave danger.

Worried about their low immunity levels, leading hospitals and research centres are advising cancer patients to remain at home till Covid infections die out. Deferment of surgeries



"We're continuing to treat critical cases in heavily quarantined buildings. We've put in place



Cancer vs COVID-19

- Risk-benefit assessment
- Increased risk of exposure to COVID-19
- Weighed against the risk of delaying diagnosis or treatment of cancer.



Dedicated Fever OPD





Separate Swab Collection & Waiting

Video: Satish Malavade/ MMCL

Mumbai Mirror

**It has created a temporary facility
at Xavier's ground, Parel**





Facilities for COVID + Cancer

COVID 19 positive
patients

Asymptomatic
ward

Symptomatic
ward

COVID ICU

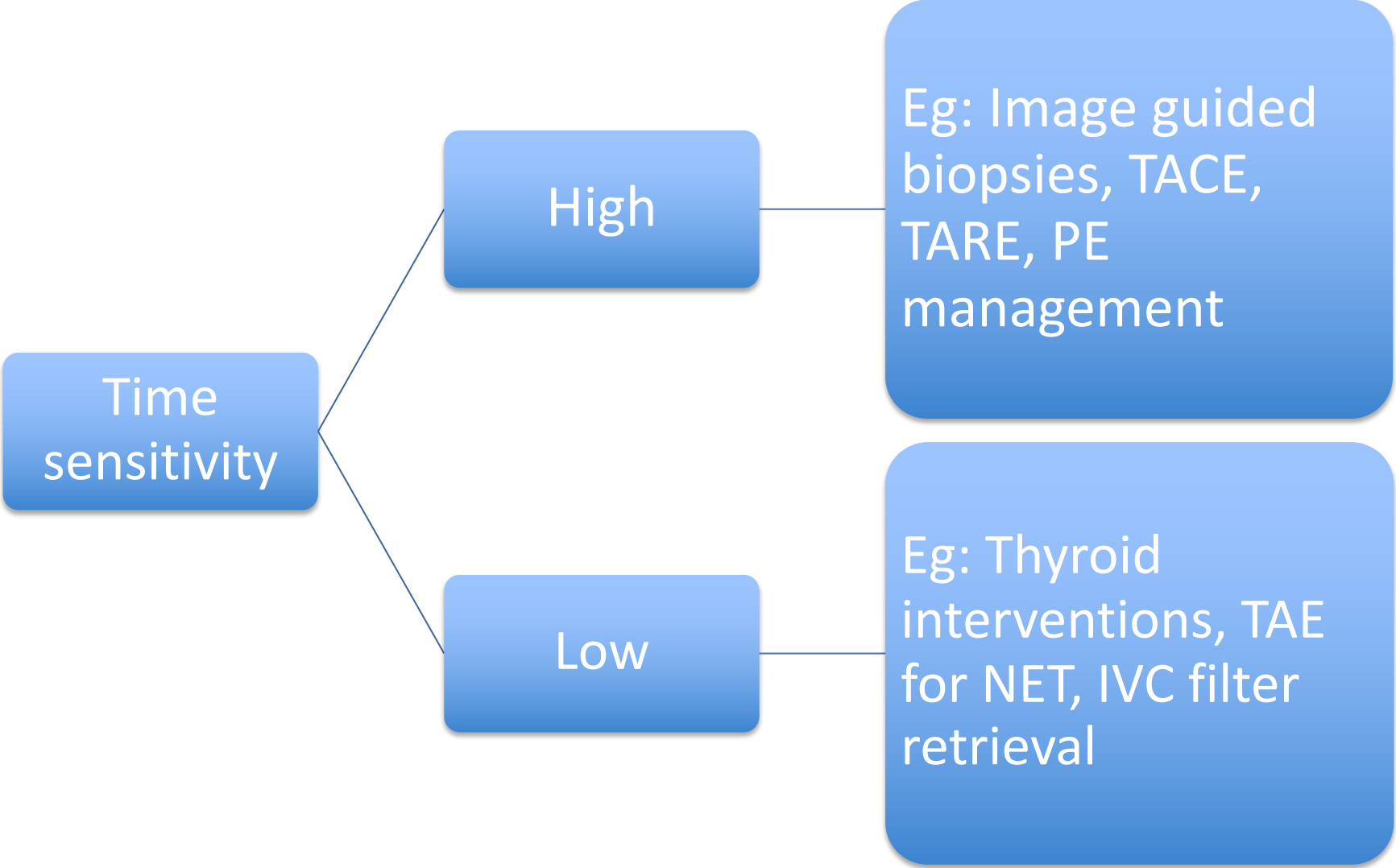


Procedural Differences- IR

- ✓ COVID 19 task force for IR input
- ✓ Inclusion of all the key personnel.
- ✓ Daily meetings – analyze situation, short notice changes
- ✓ Triage patients and schedule accordingly



Triage



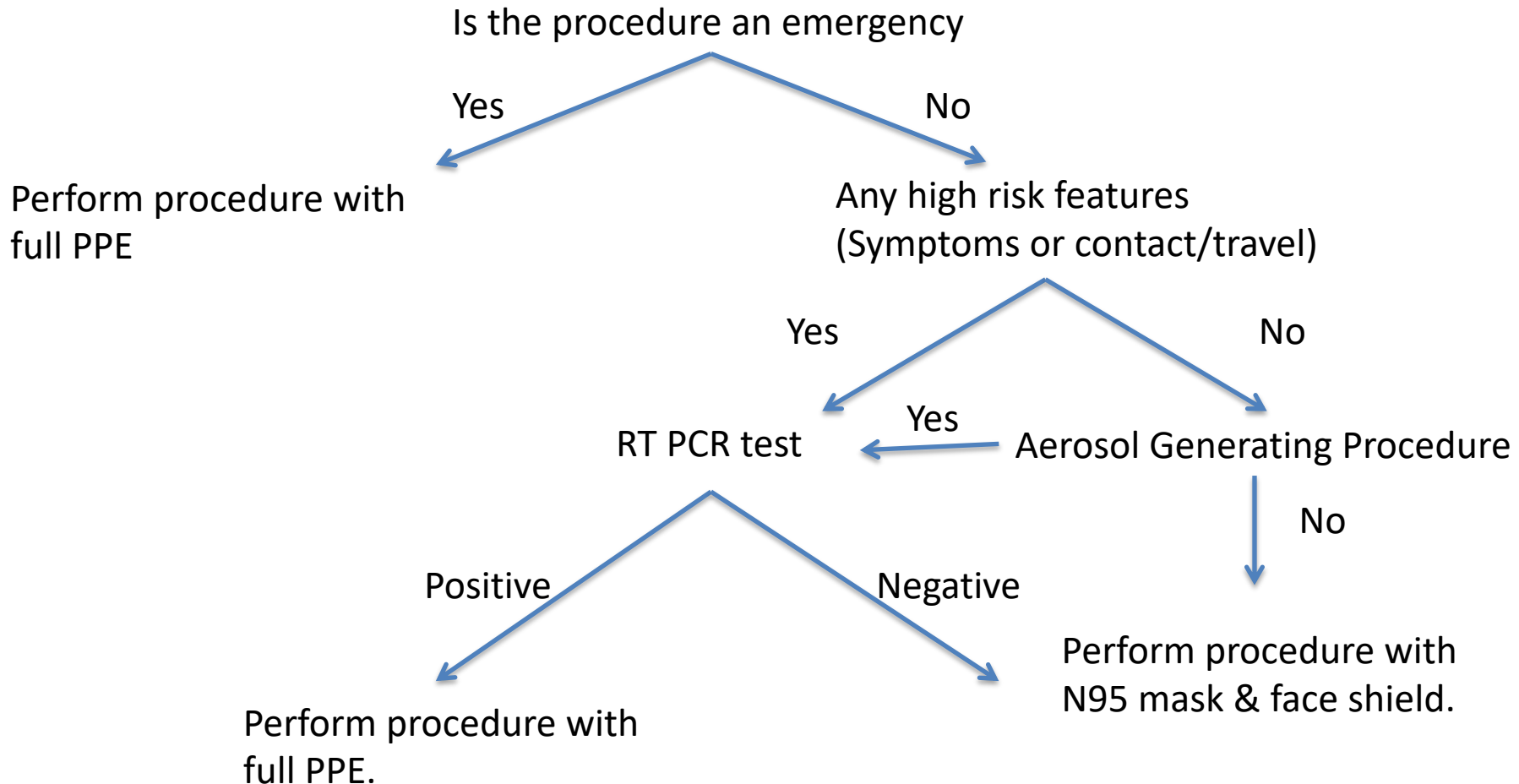


Infection Prevention & Control

- Every member of IR team - up to date as per TMH protocol
- Training on
 - Hand hygiene
 - How to don and doff (PPE) properly
- Posters/visual aids at strategic locations around IR area
- Ensure implementation of infection control and remedy



PPE Kit Allocation



- All personnel in the IR-OT had to wear double masks (N95 mask +3 ply surgical mask)
- & face shield continuously.
- It was mandatory for all patients to wear 3 ply surgical masks.



Procedures for COVID Negative patients





Procedures - COVID Positive patients





PSYCHOLOGICAL SUPPORT SYSTEMS

- Staff is worried for **personal and family safety**.
- **Reluctance** to participate in procedures for COVID-19 patients
- **“Excessive demand for PPE”** beyond recommendations
- Some Staff excessively **unconcerned** and **not fully complying** with precautions
- **Peer support groups** formed

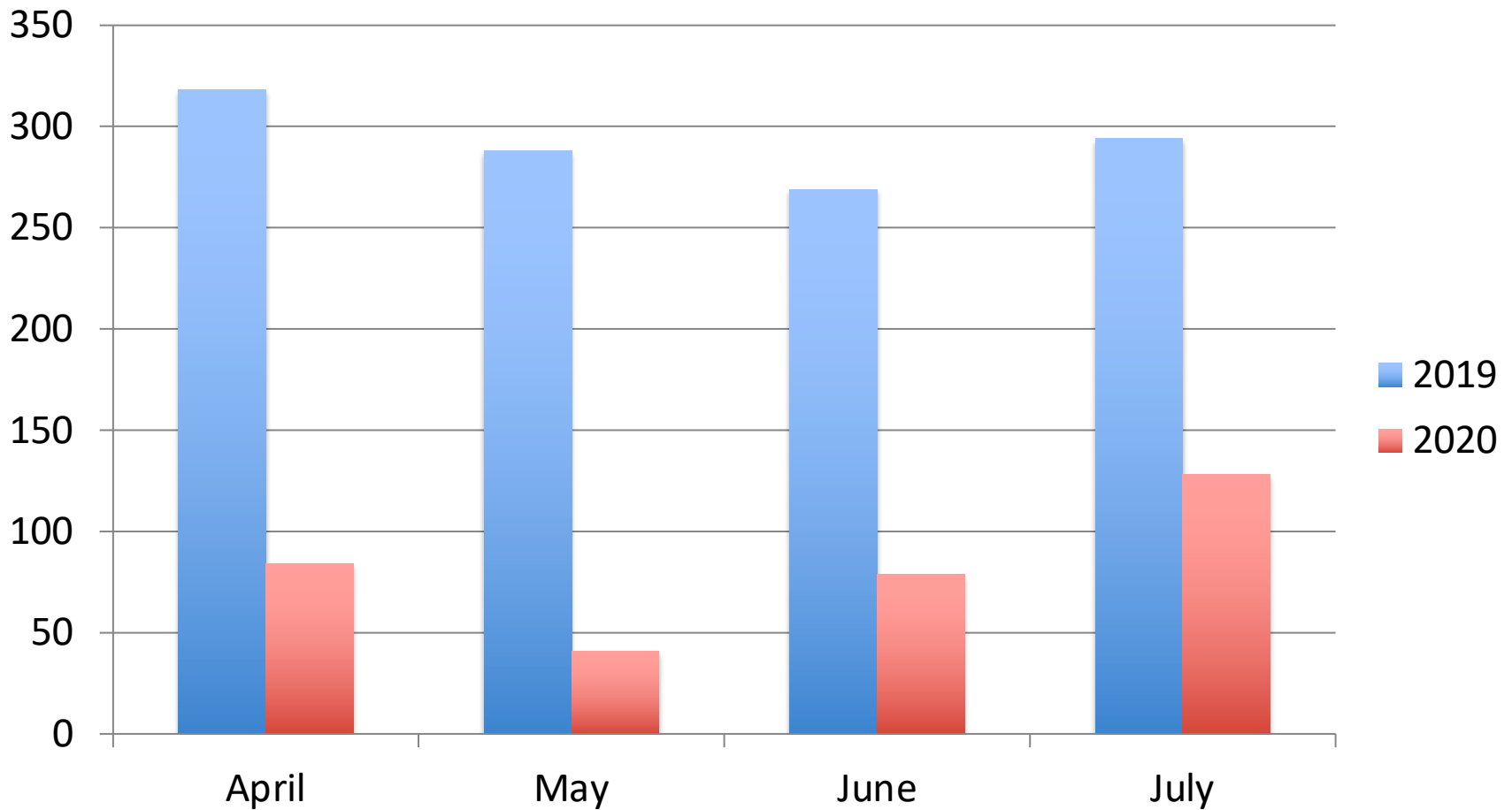


IR RESIDENTS AND FELLOWS

- Academics continued using video conferencing platforms.
- A rare opportunity for education in the management of a disease outbreak / Pandemic
- Safety of all members-in-training must be prioritized.

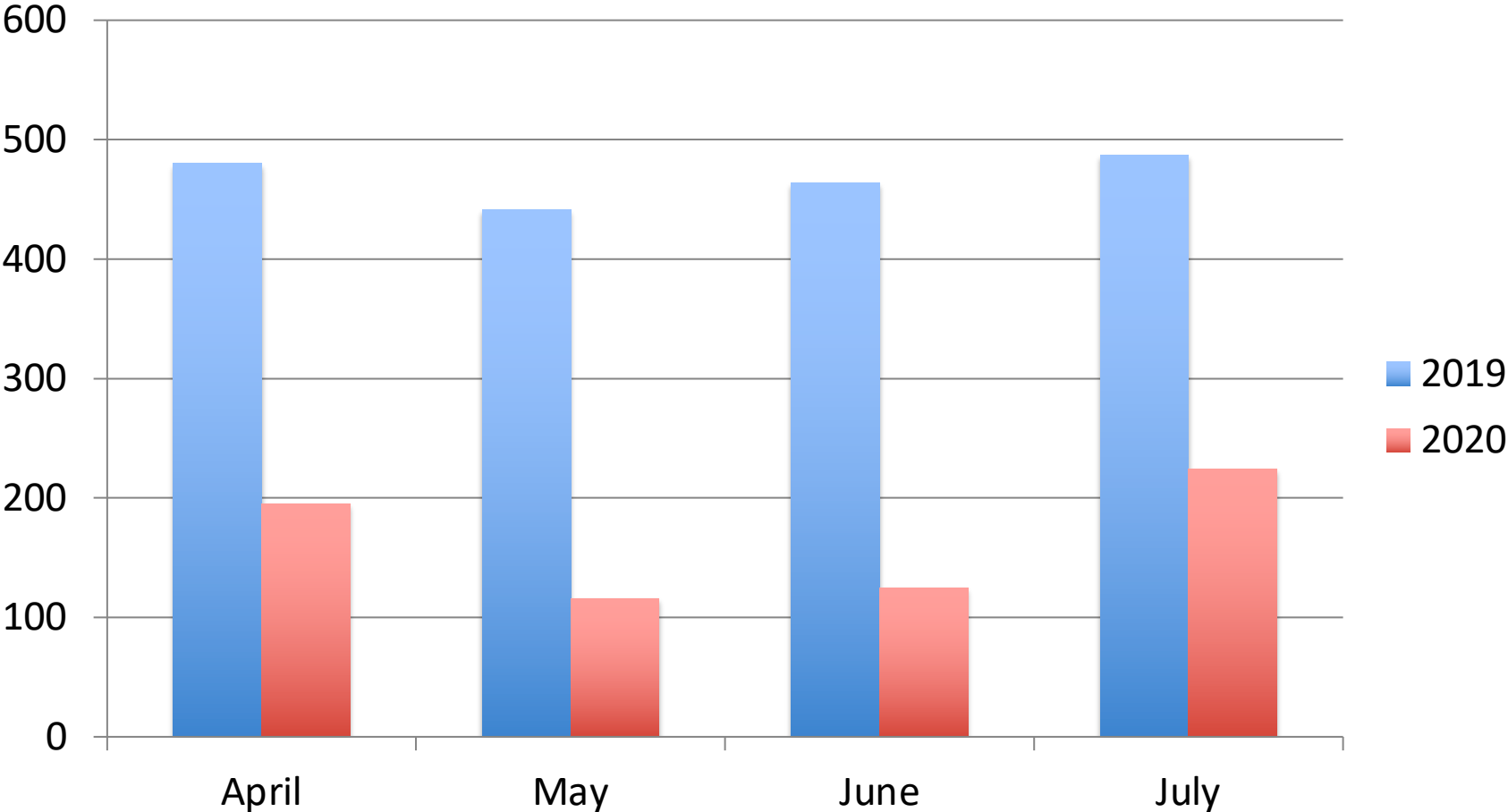


CT guided biopsies, drainages





Cathlab procedure(CT-DSA)





Summary

- Cancer pts with Covid - 923 (141 Children)
- Staff turned COVID positive - 614 (58 Doctors)
- Interventional Radiology :
 - Doctors - COVID positive -3 / 19
 - Paramedical staff - COVID positive- 5 /33
- *No COVID related deaths among staff*



Newest Exciting Thing in IO



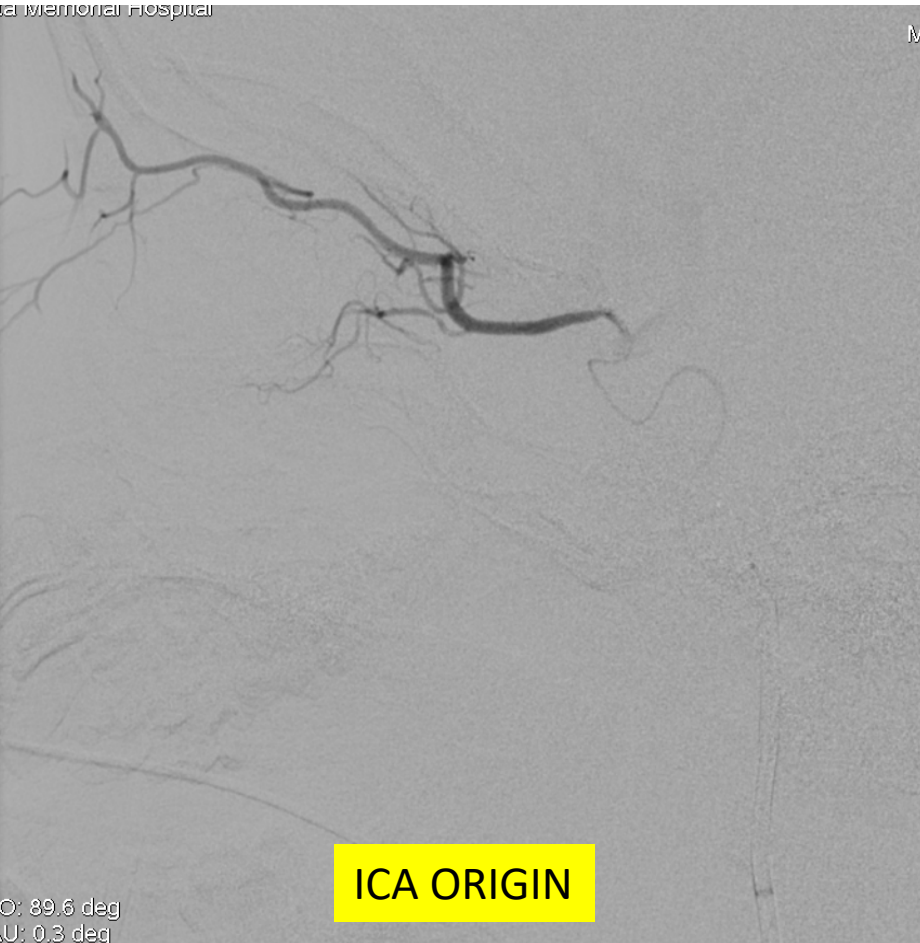
Ophthalmic Artery Chemoinfusion

- Mainstay in management of **Intraocular Retinoblastoma**
- Rapid progression mandates early treatment
- Significant impact on survival as well as globe salvage with treatment



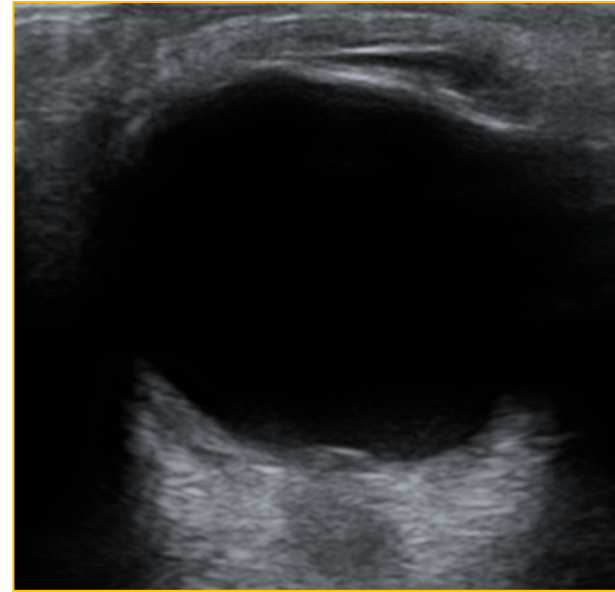
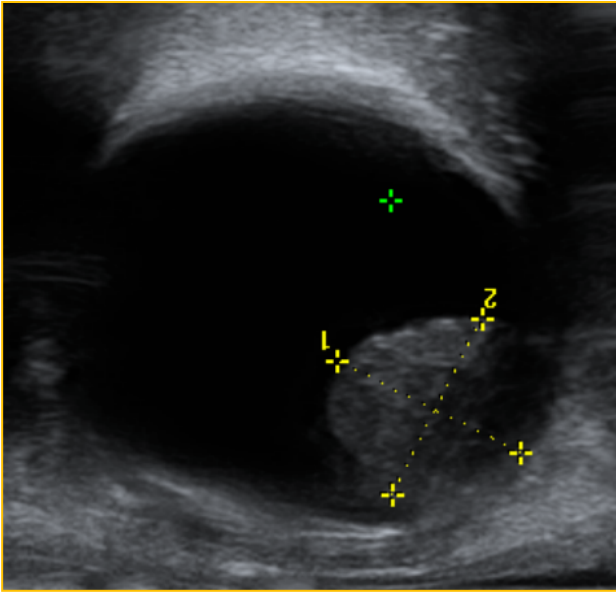
Selective Ophthalmic Arterial Cannulation

Tata Memorial Hospital



Chemotherapeutic Agents: 1.Melphalan ,2. Carboplatin , 3. Topotecan

Response evaluation





Outcome

Total Eyes treated	83 /70
Complete Response	27.7 %
Downstaged to Focal Consolidation	36.4 %
Enucleation	32.5 %
EBRT	03.4%



Globe Salvage Rate

Type	Globe Salvage Rate
Group B	83.3 %
Group C	83.3 %
Group D	64.7 %
Group E	65 %
Overall	67.5 %

