

Case Study

Edward Kim, MD, FSIR

Associate Professor of Radiology and Surgery

Director, Interventional Oncology

Mount Sinai Health System

New York, NY

Disclosures

Consultant

- Boston Scientific
- Bristol Myers Squibb

Grants/Research Support

- Philips Healthcare

Speakers' Bureau

- Boston Scientific

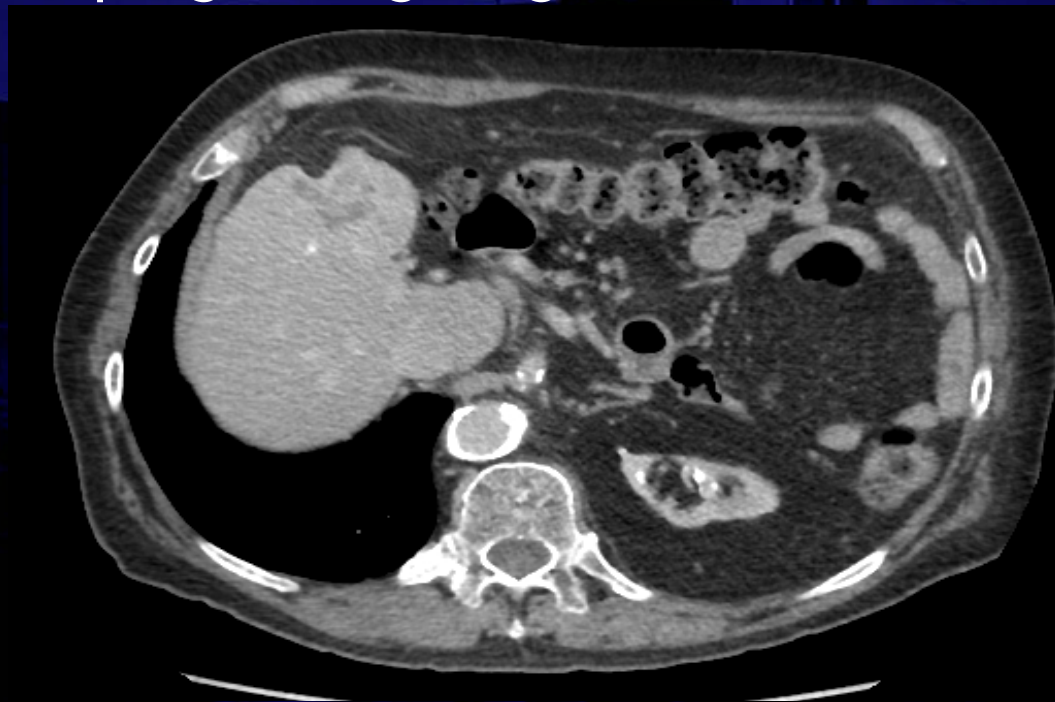
*Brand names are included in this presentation for participant clarification purposes only.
No product promotion should be inferred.*

Disclosure

- ▶ Off-label use of TheraSphere will be discussed

Cholangiocarcinoma

- ▶ 84 yo male with left lobe cholangiocarcinoma progressing on gem/cis



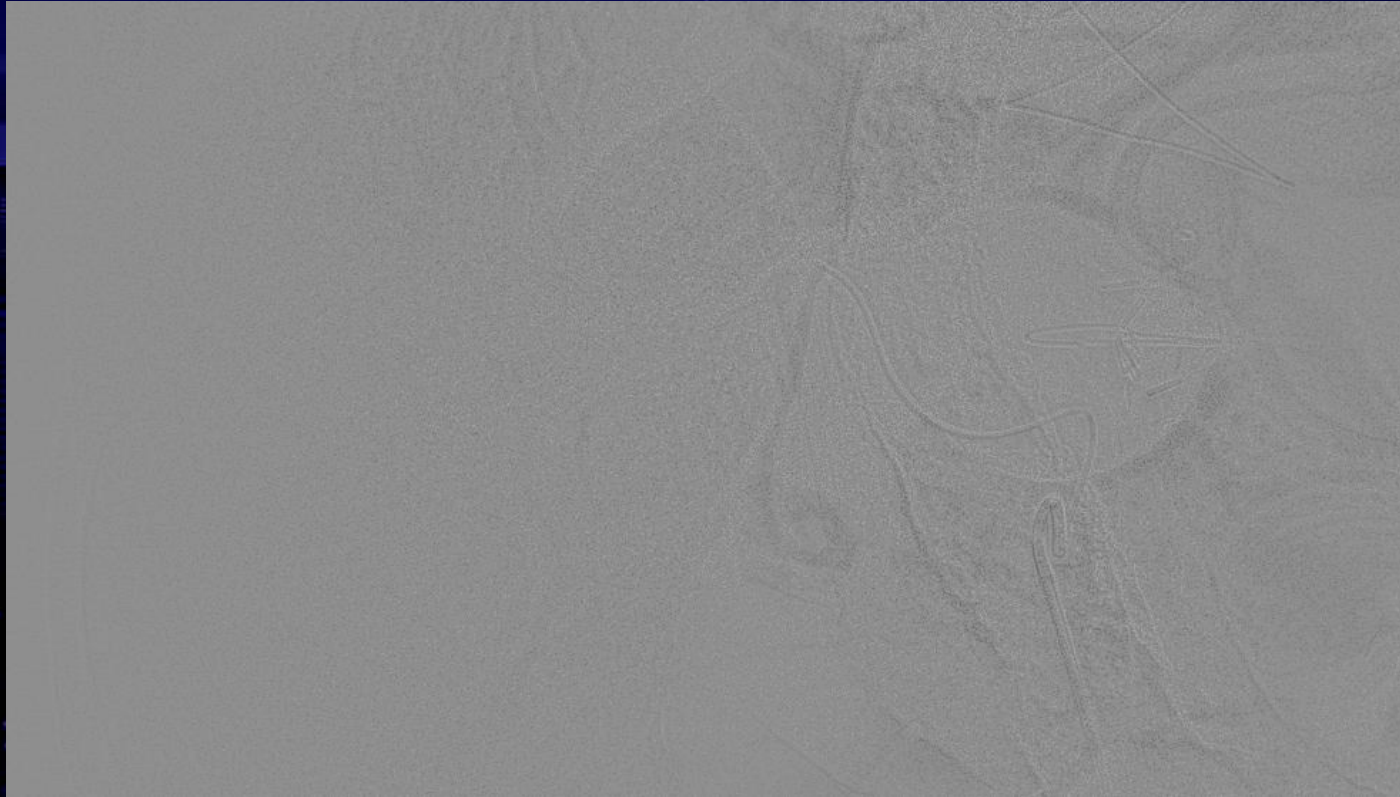
ECOG 0
Total Bilirubin 0.4
Albumin 3.5
INR 1.0
CA 19-9 2.2

Celiac Angiography



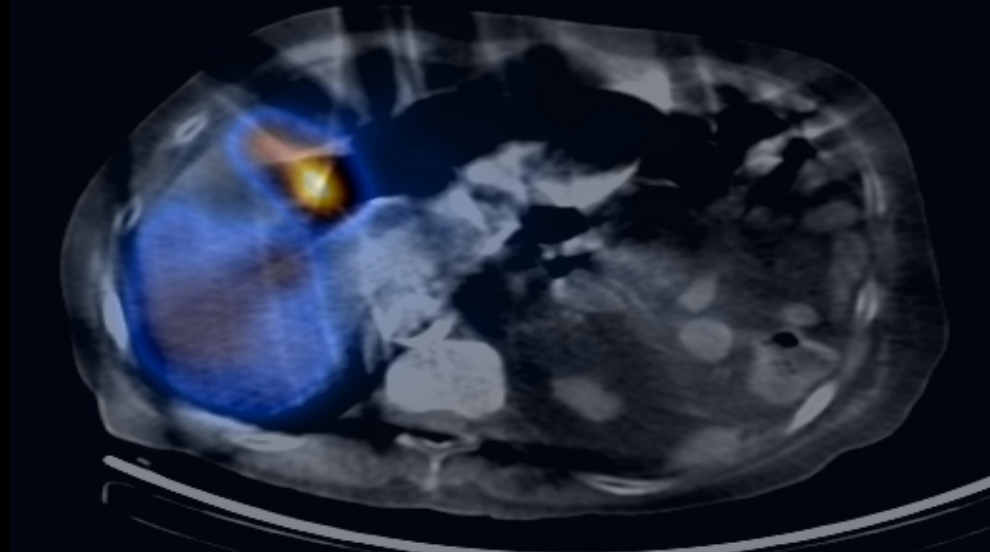
**Mount
Sinai**

Left Hepatic Angiography (AP Shunt)

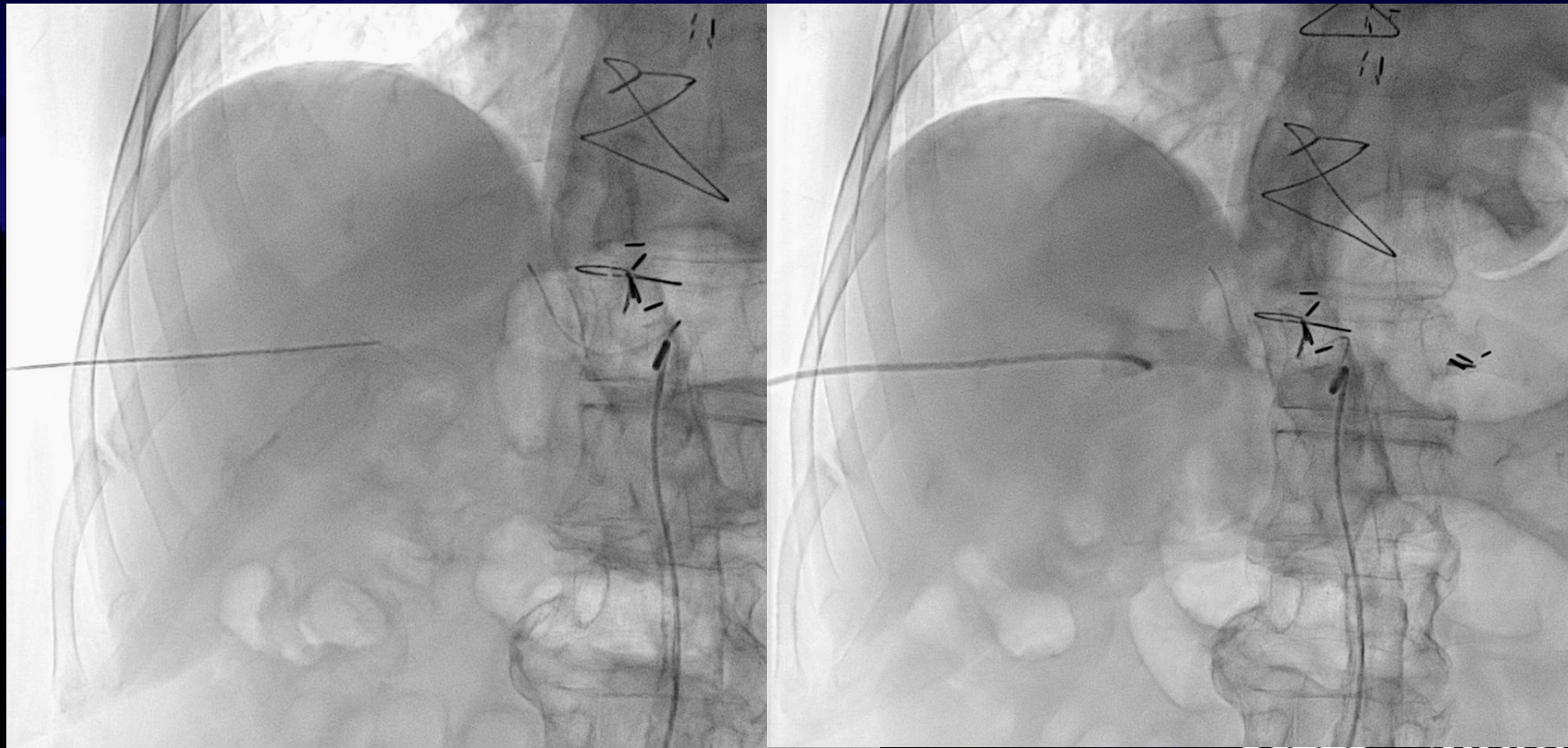


Mount
Sinai

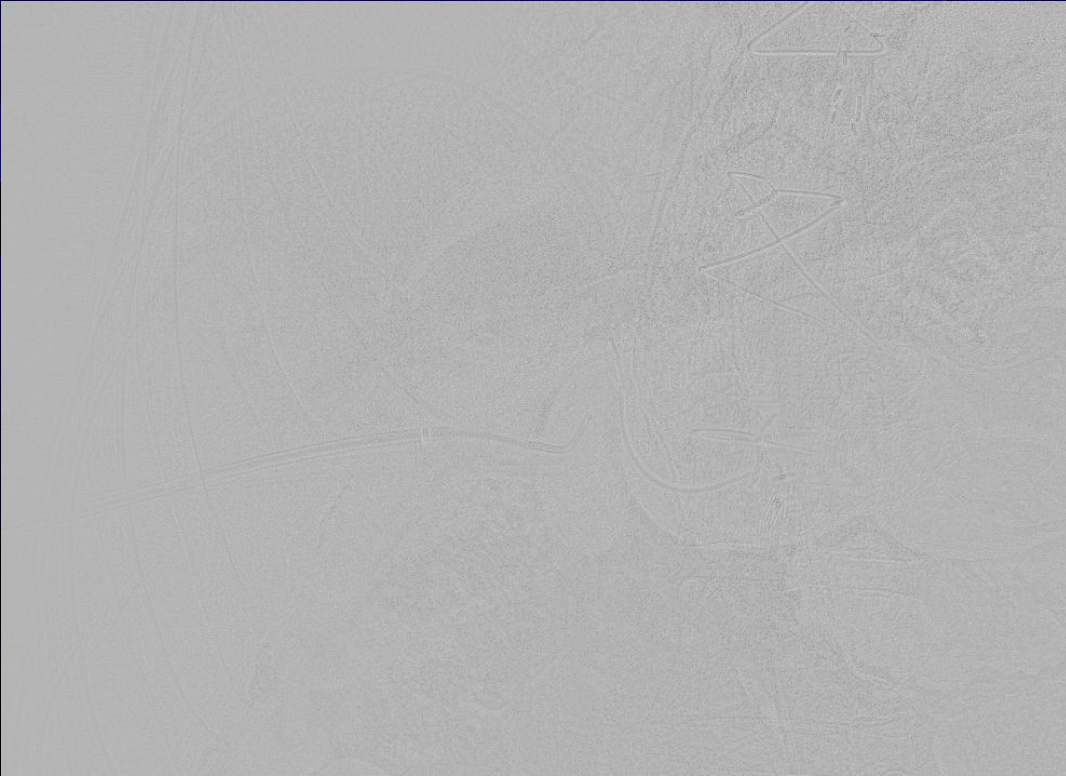
CBCCT and SPECT/CT After MAA Injection



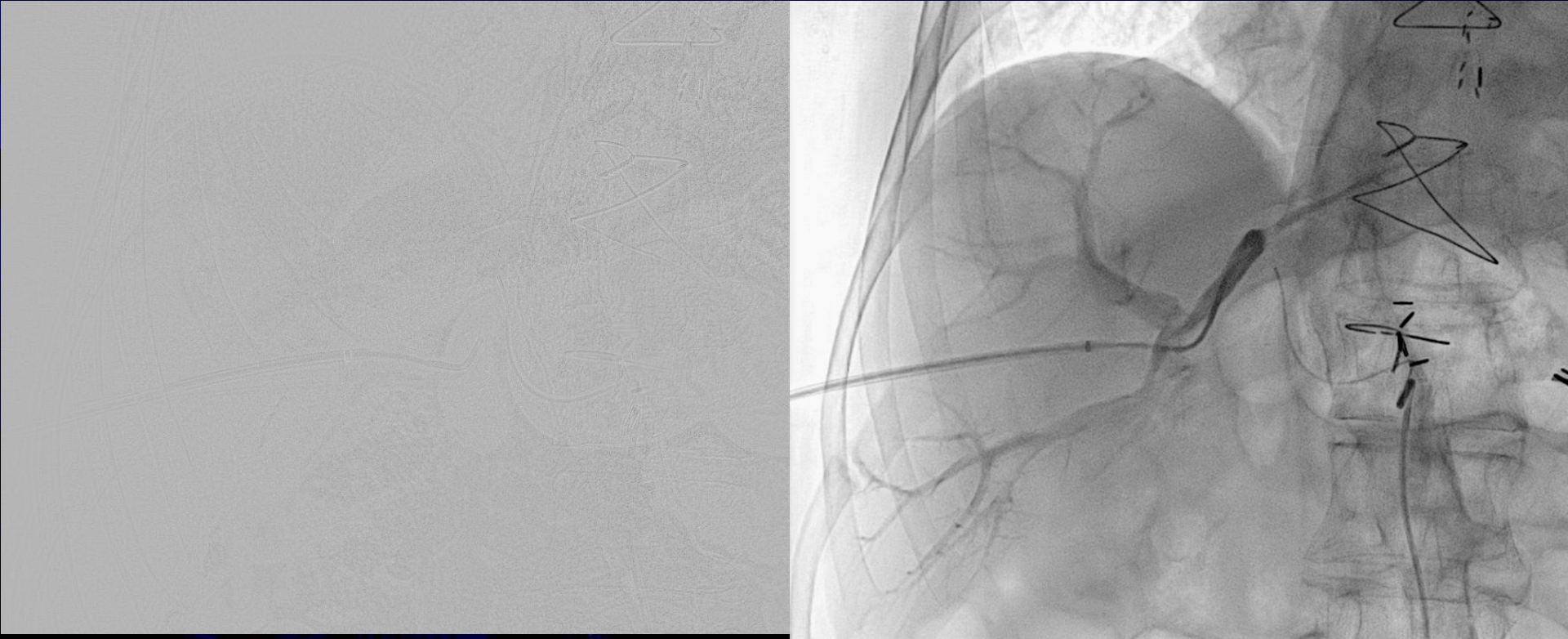
Direct Portal Stick



Angiography to Map Portal Branch



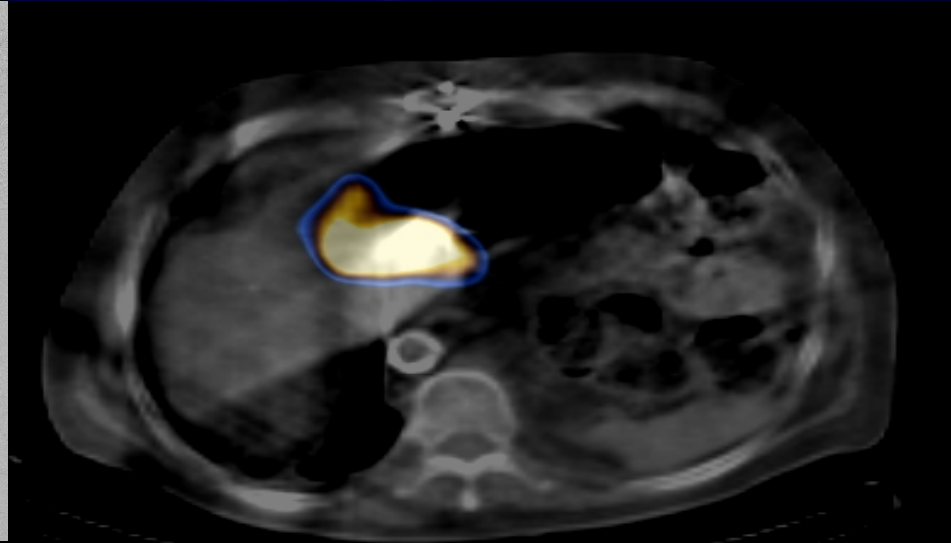
Angiography to Map Portal Branch



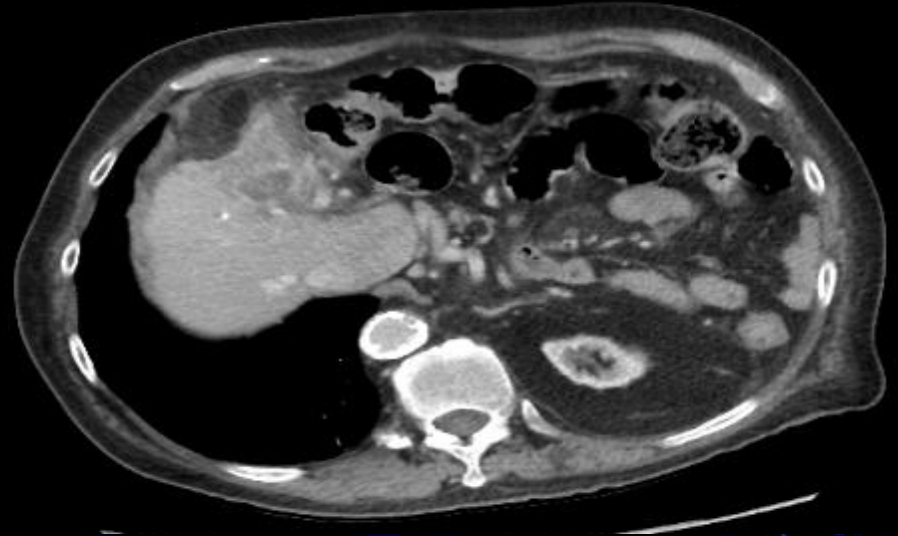
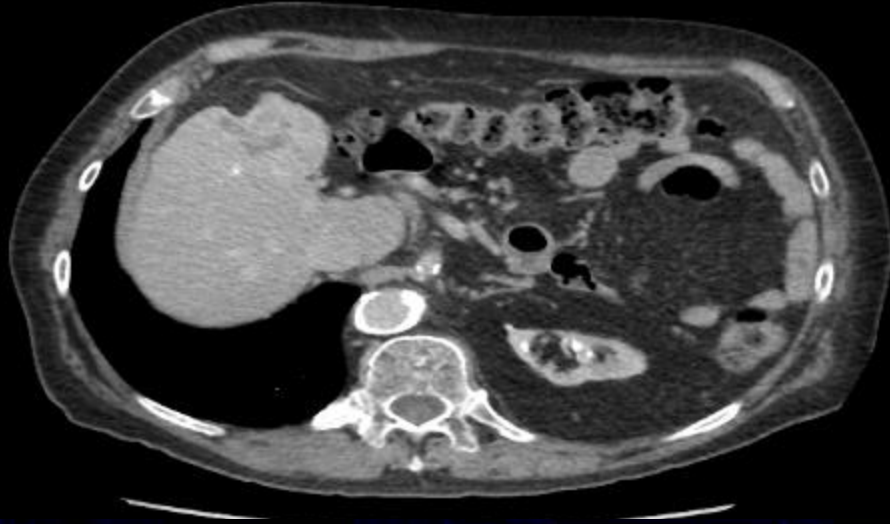
Occlusion Balloon in Selective Portal Branch



Angio Post Balloon and SPECT/CT Post Y90



Pre- and 12-Months Post Y90



Lab values stable
ECOG 0
No further chemo since Y90

Thanks



**Mount
Sinai**