

Tips and Tricks to Optimizing Outcomes Bland Embolization: My Top 5 Technical Pearls

(Don't worry, I know you won't do it!)

Karen T. Brown MD, FSIR
Professor of Radiology
University of Utah
Salt Lake City, Utah

Session 2
Tuesday, October 13, 2020
Virtual (Coming to you from Hilton Head, SC.)

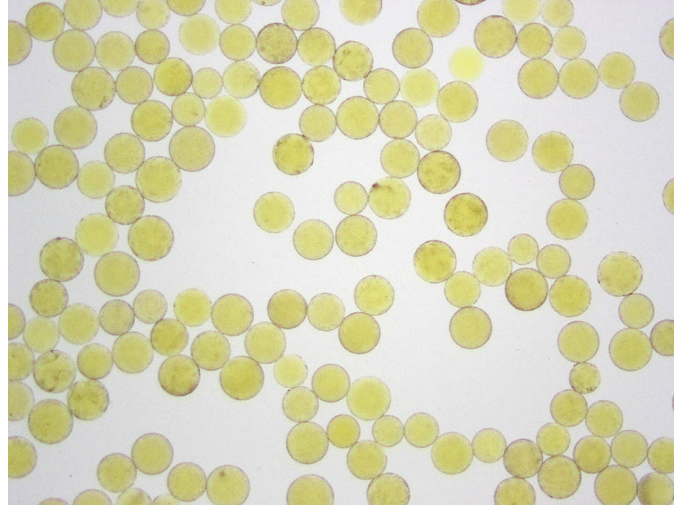
Disclosures

Karen T. Brown, MD has nothing to disclose.

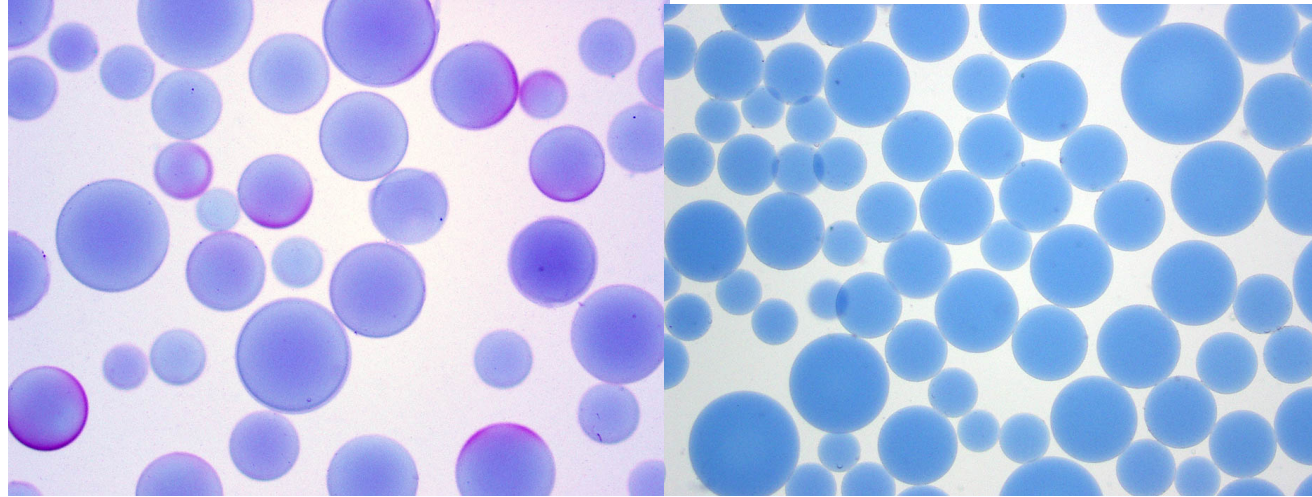
*Brand names are included in this presentation for participant clarification purposes only.
No product promotion should be inferred.*

“Know Thy Embolics”

(This should probably
be the first “pearl”)



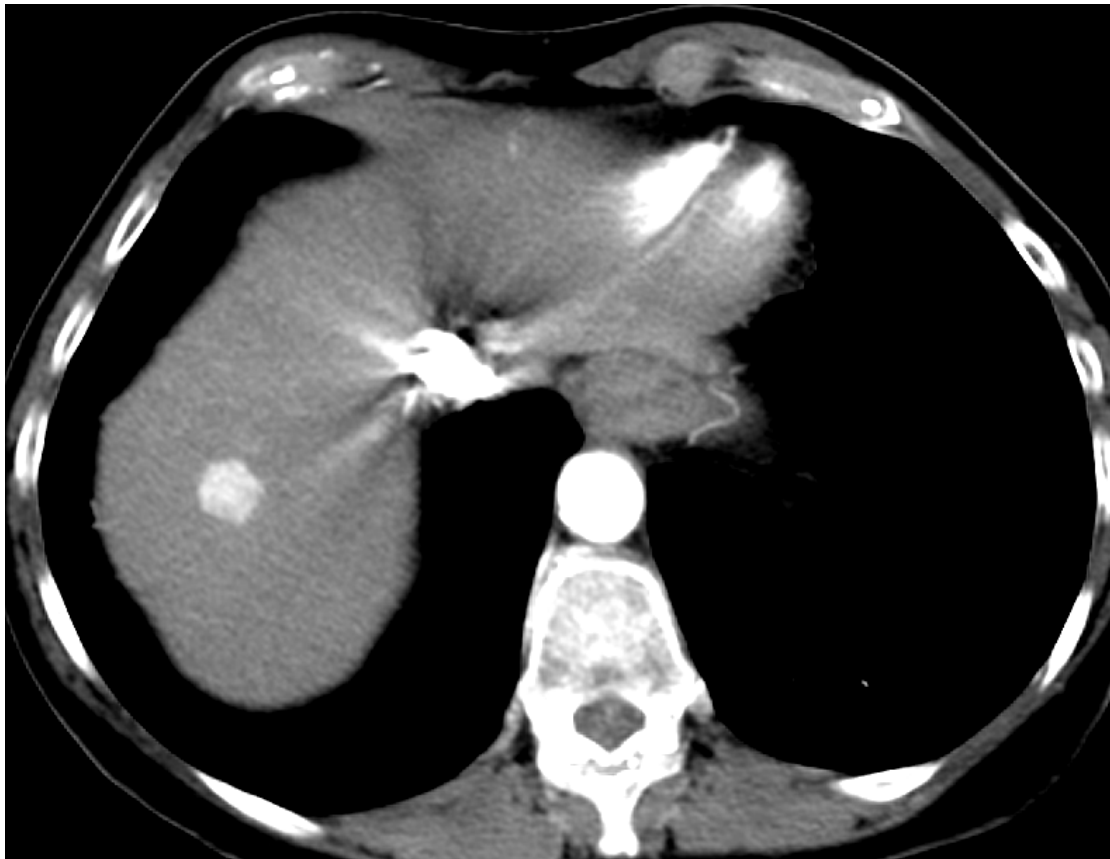
Embozene™ 100 micron



Embospheres™ 100-300 micron Bead Block™ 100-300 micron

Pretreatment CT 1.31.16

Arterial Phase

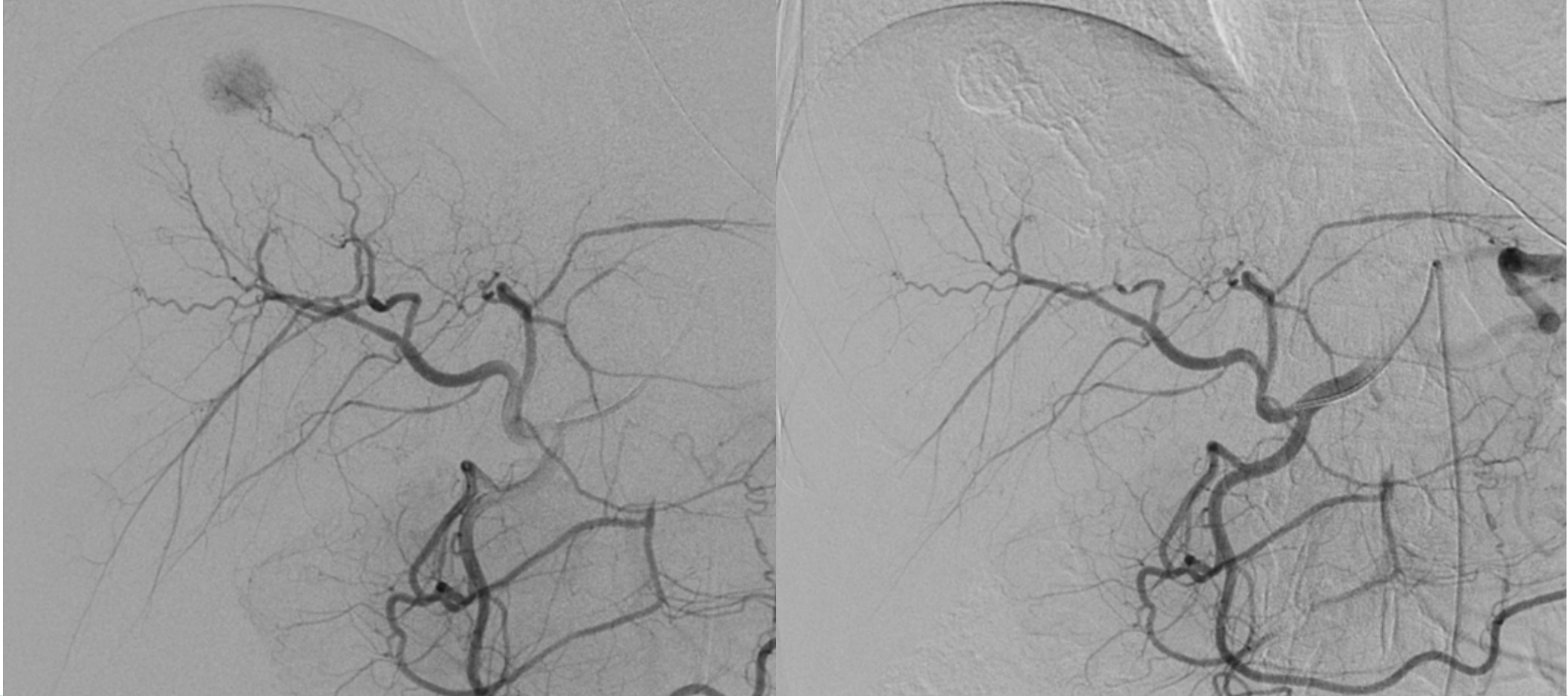


Portal Venous Phase



Embolization 2.9.16, Used 0.5cc 40μ Embozene™

#1: Anesthesia!!



Immediate Post-Embolization CT and Biopsy 2.9.16

#2: You can see what you bland embolize!!

CT with Marker Grid

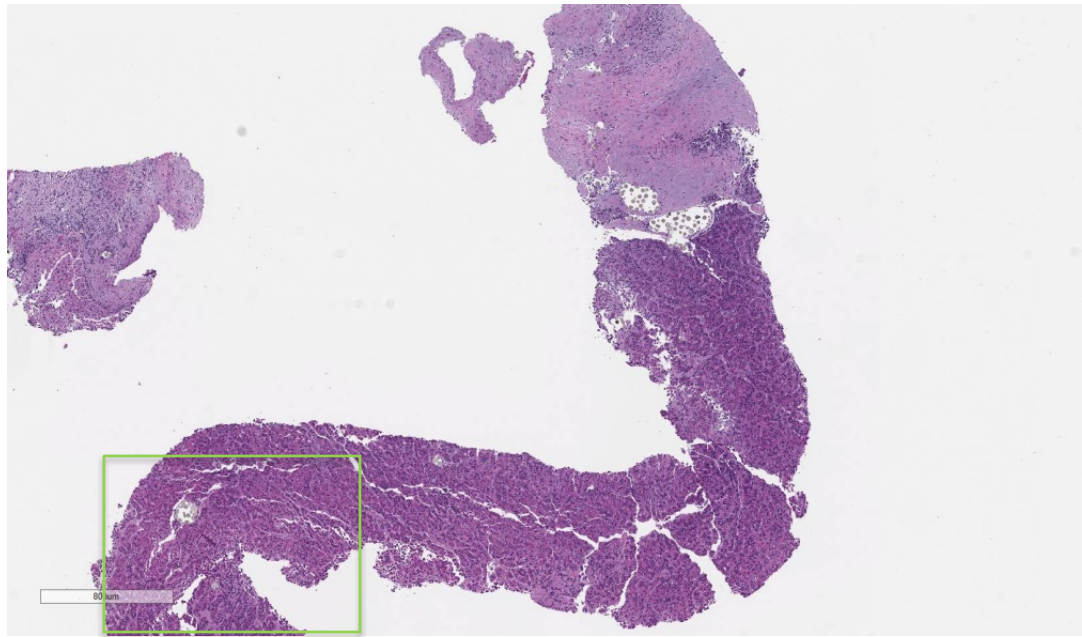
Biopsy



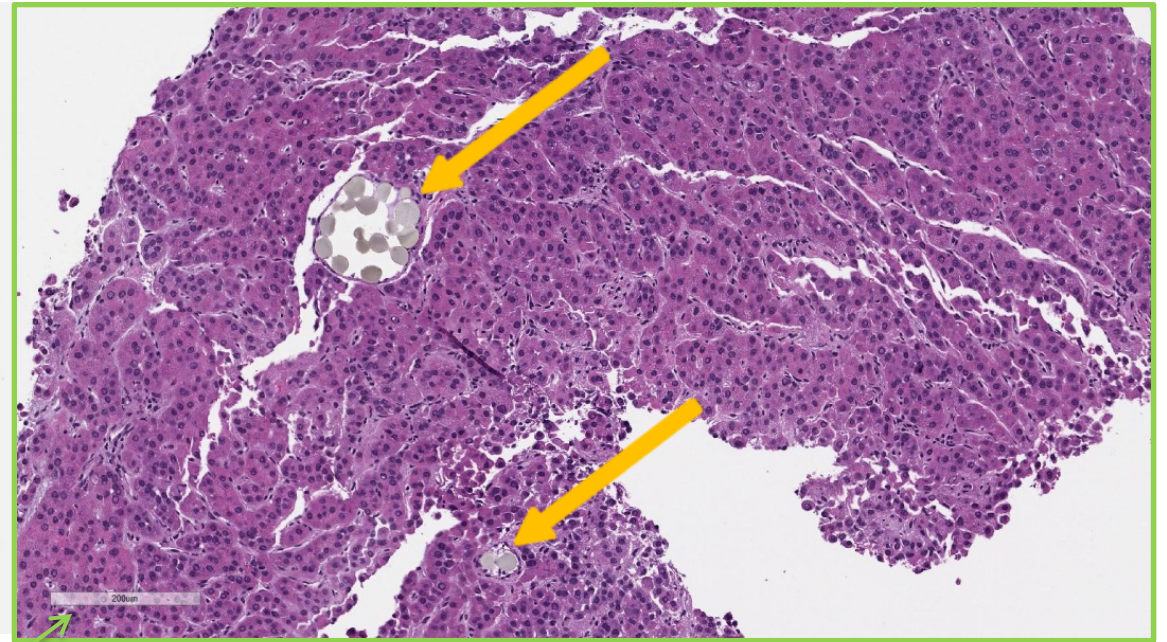
Histopathology from the Biopsy

#3: Biopsy OK after embolization

Low Power



High Power



200-micron scale

Pretreatment and 1-Month Post-Treatment CT Portal Venous Phase Scans

1.31.16



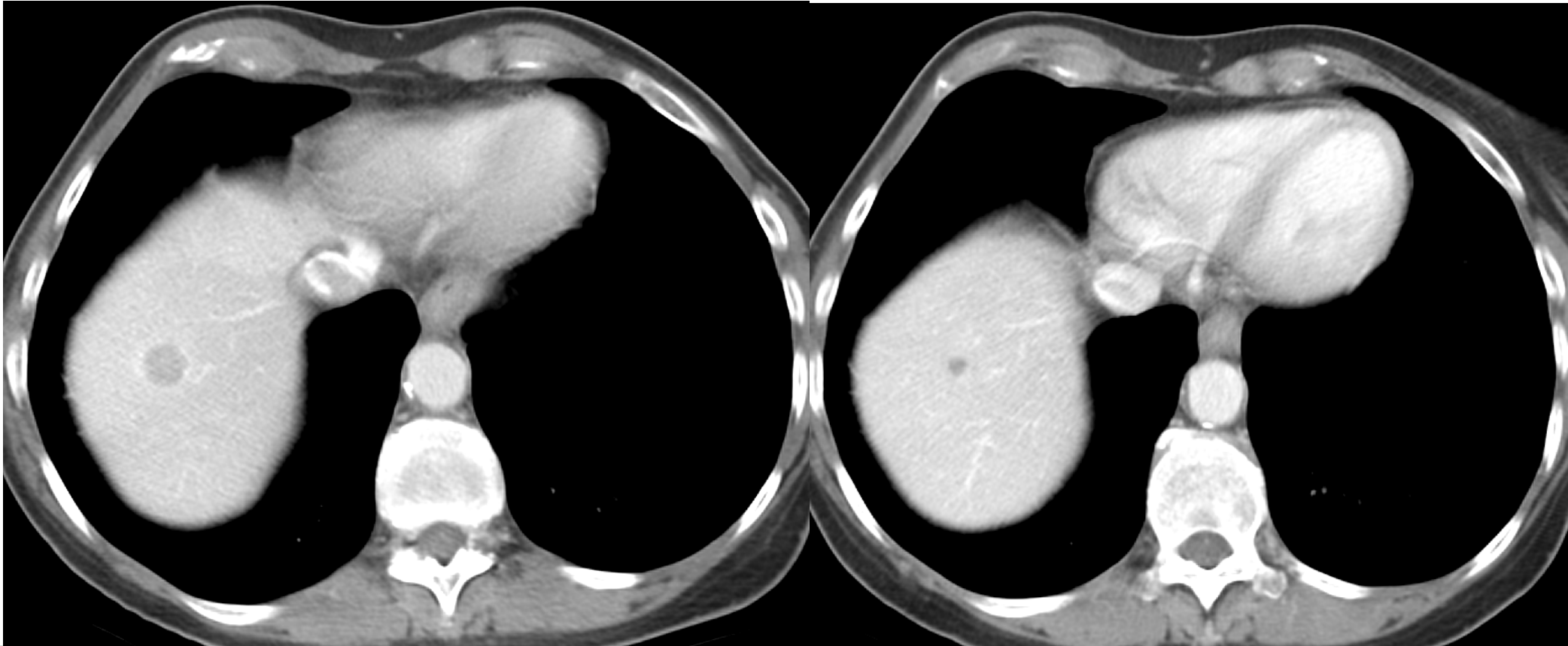
3.11.16



Pretreatment and 8-month Post-Treatment CT Portal Venous Phase Scans

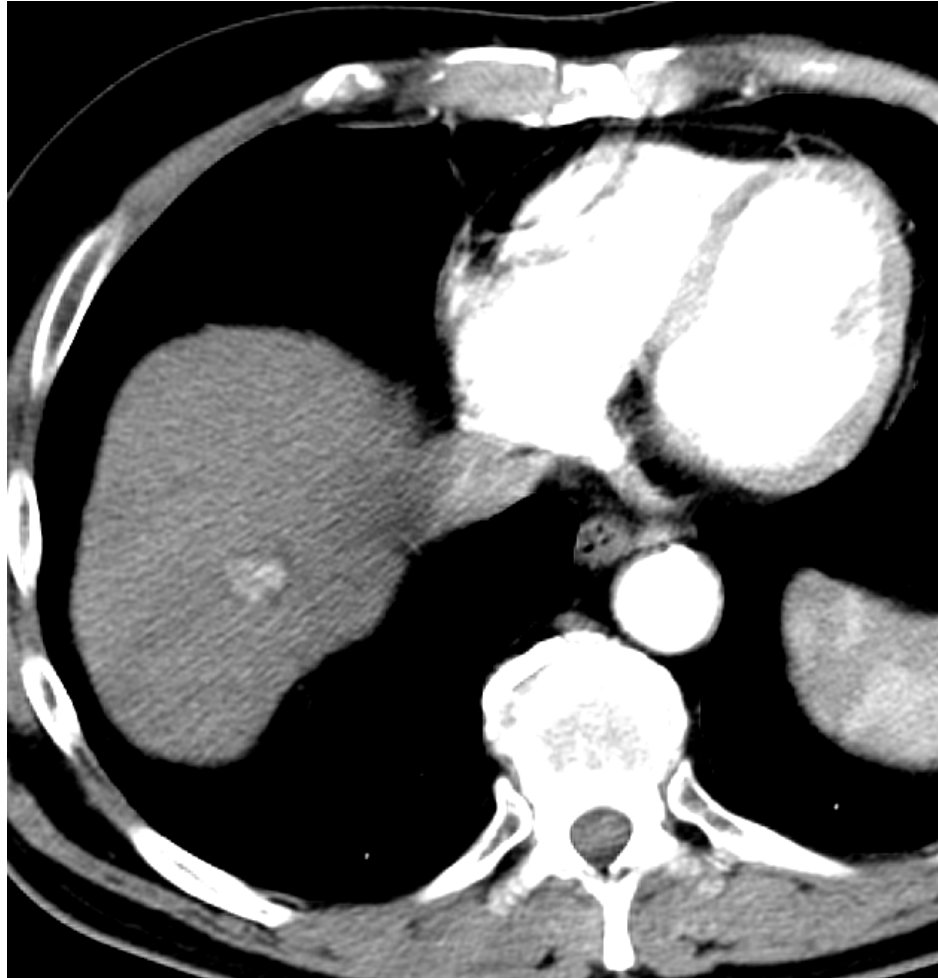
1.31.16

9.23.16

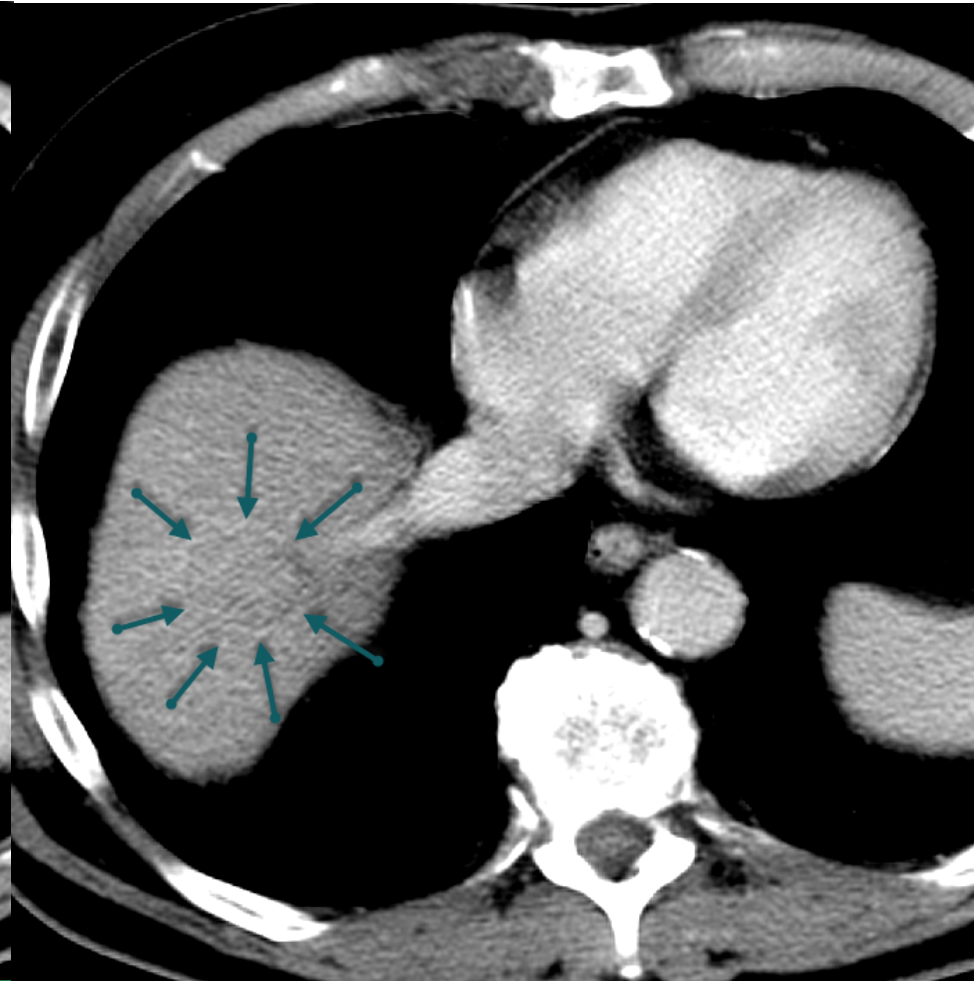


Pretreatment CT 12.22.16

Arterial Phase

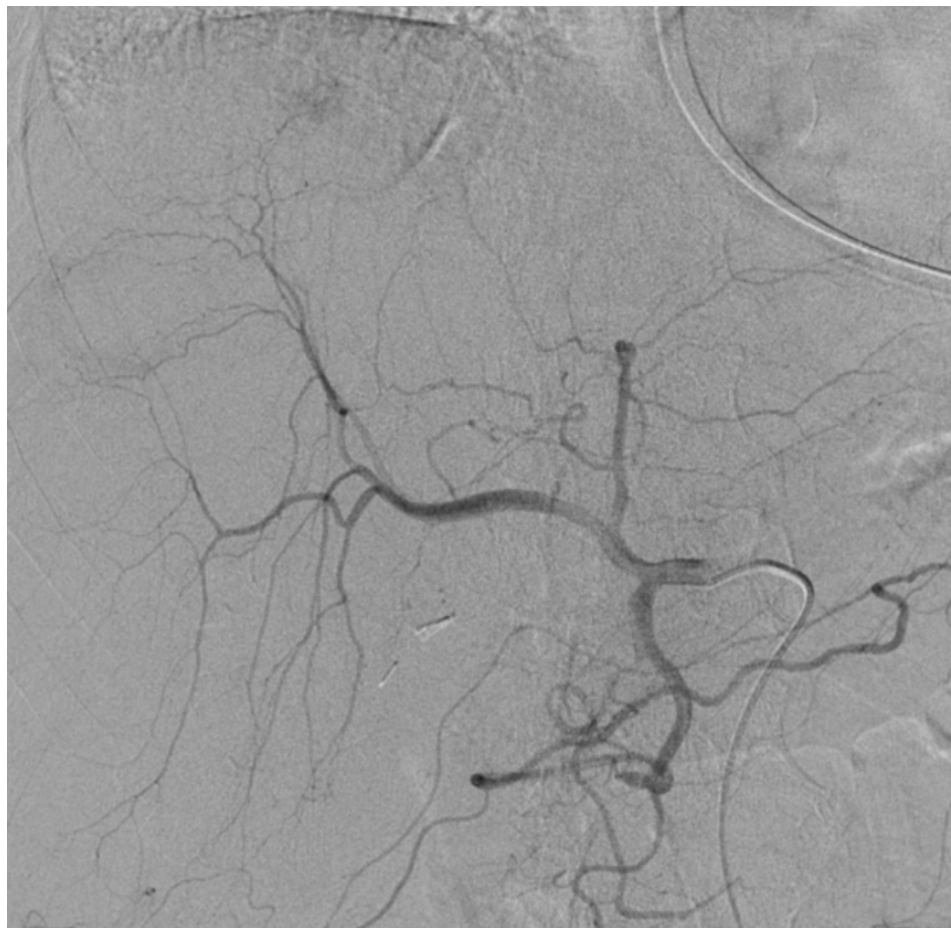


Portal Venous Phase



CHA Angiography 1.17.17

Pre-Embolization



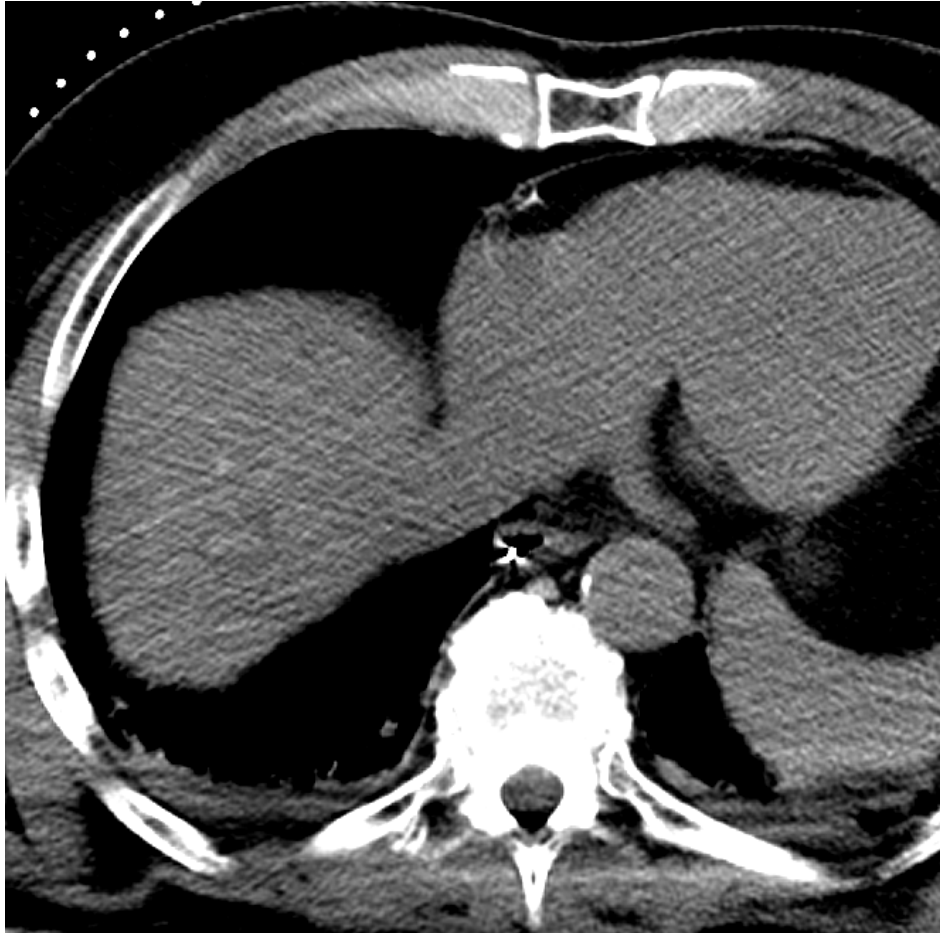
Post-Embolization



Post-Embolization Biopsy & Ablation 1.17.17

#4: Embo + Ablation

Immediate CT



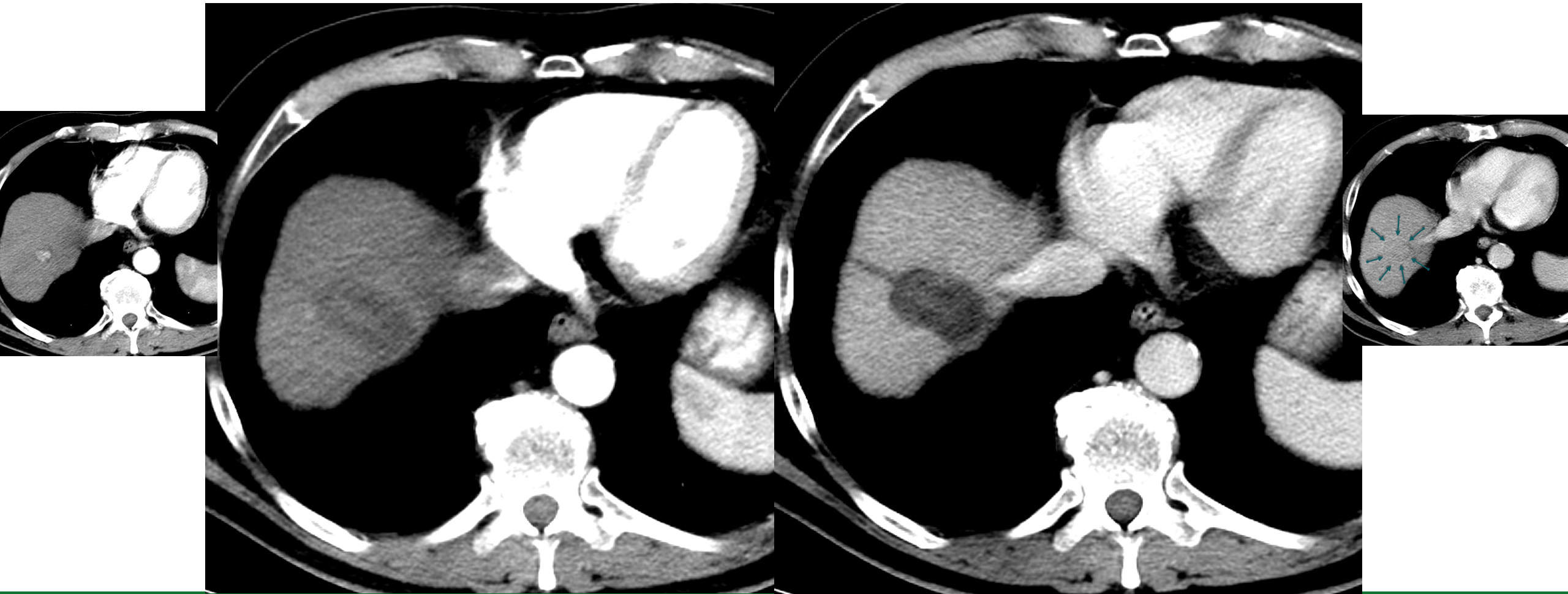
Ablation Biopsy



Multi-Phase CT 1 Week After treatment 1.24.17

Arterial Phase

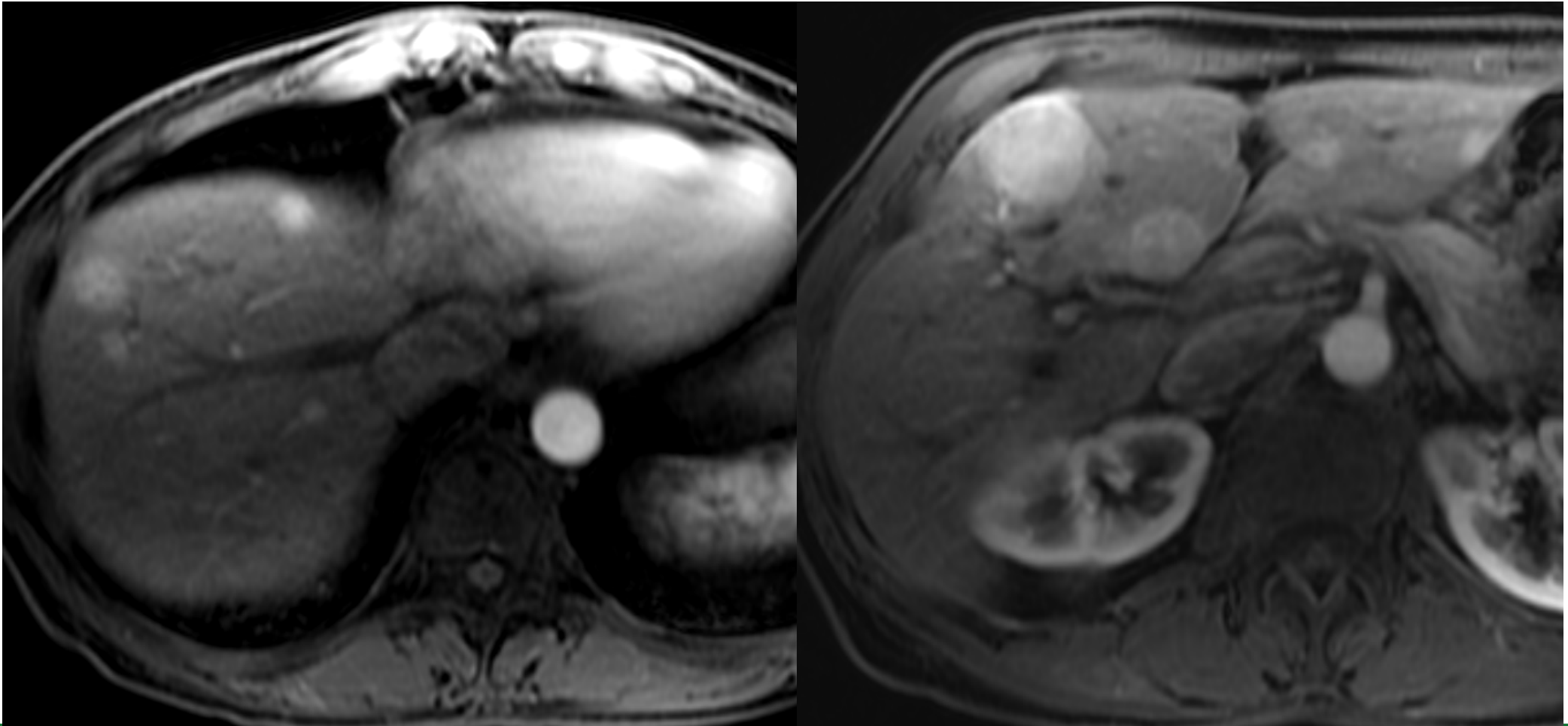
Portal Venous Phase



MR 10.18.2016



Pretreatment MR 10.18.16

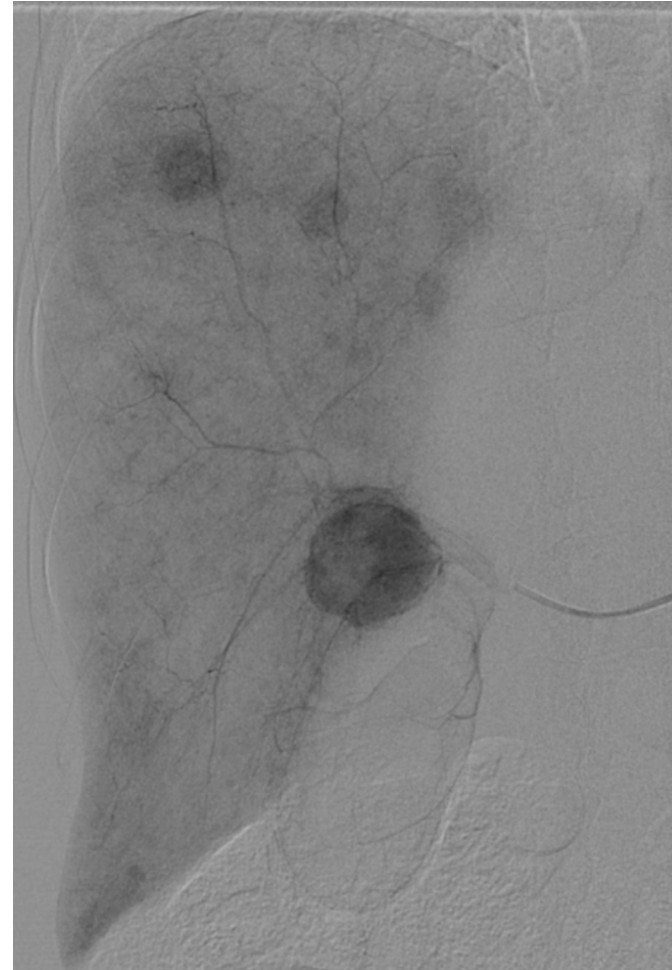


Right Hepatic Angiogram 1.23.17

Early Arterial

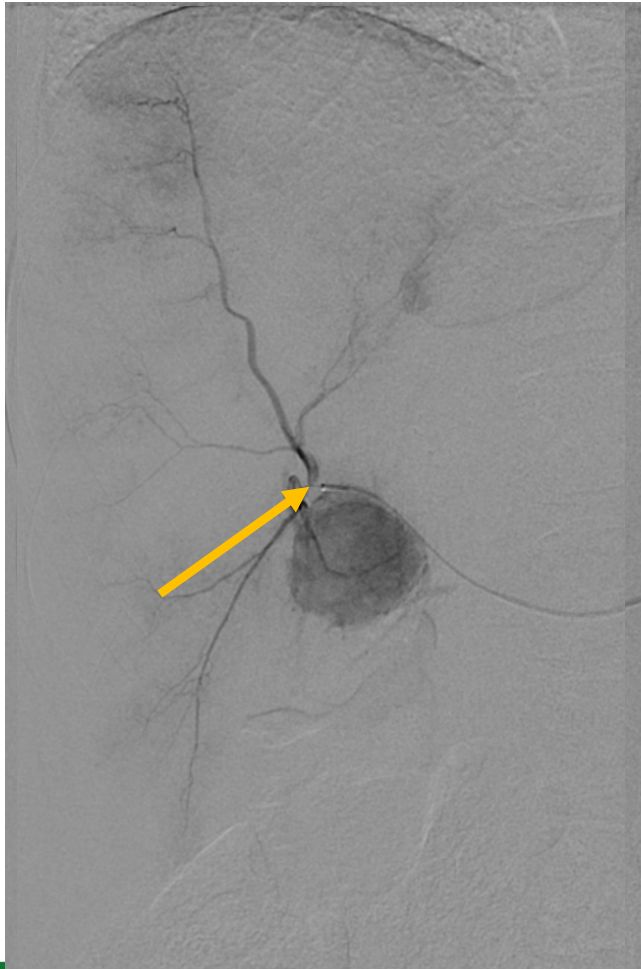


Parenchymal Phase



RHA Angiography Pre/Post-Embolization 1.23.17

Pre-Embolization Anterior RHA



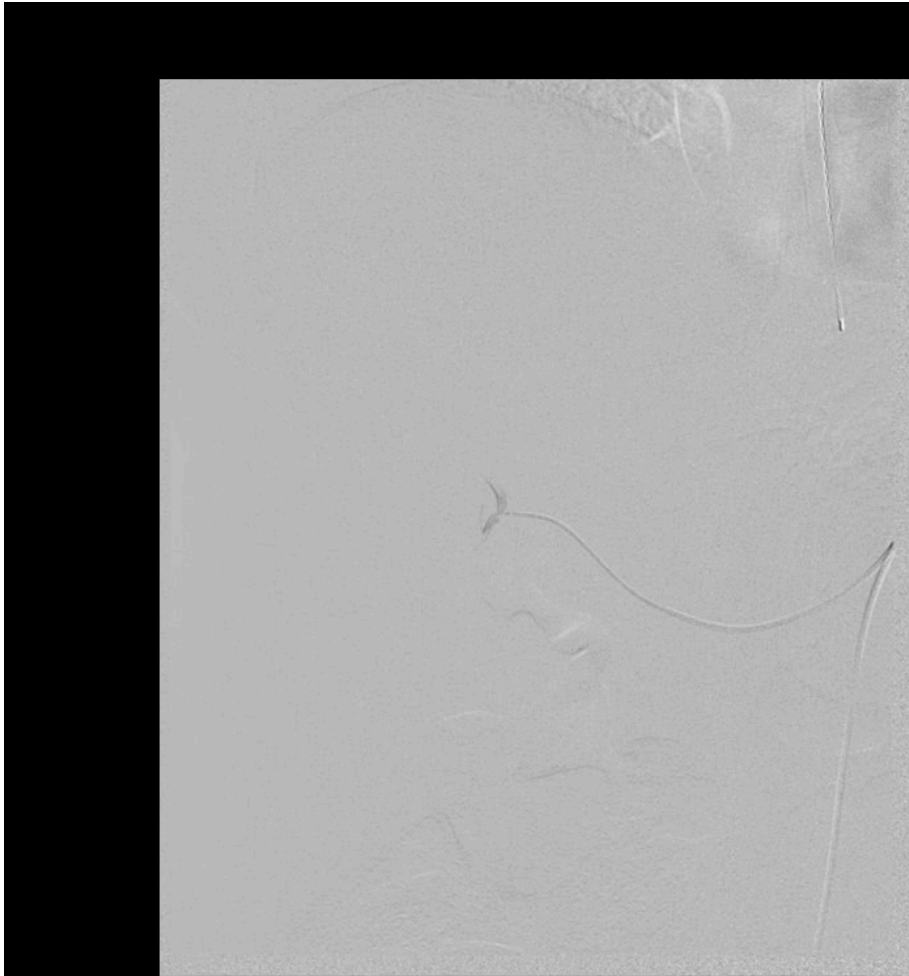
Post-Embolization Anterior RHA



Used 1cc 75-micron
Embozene

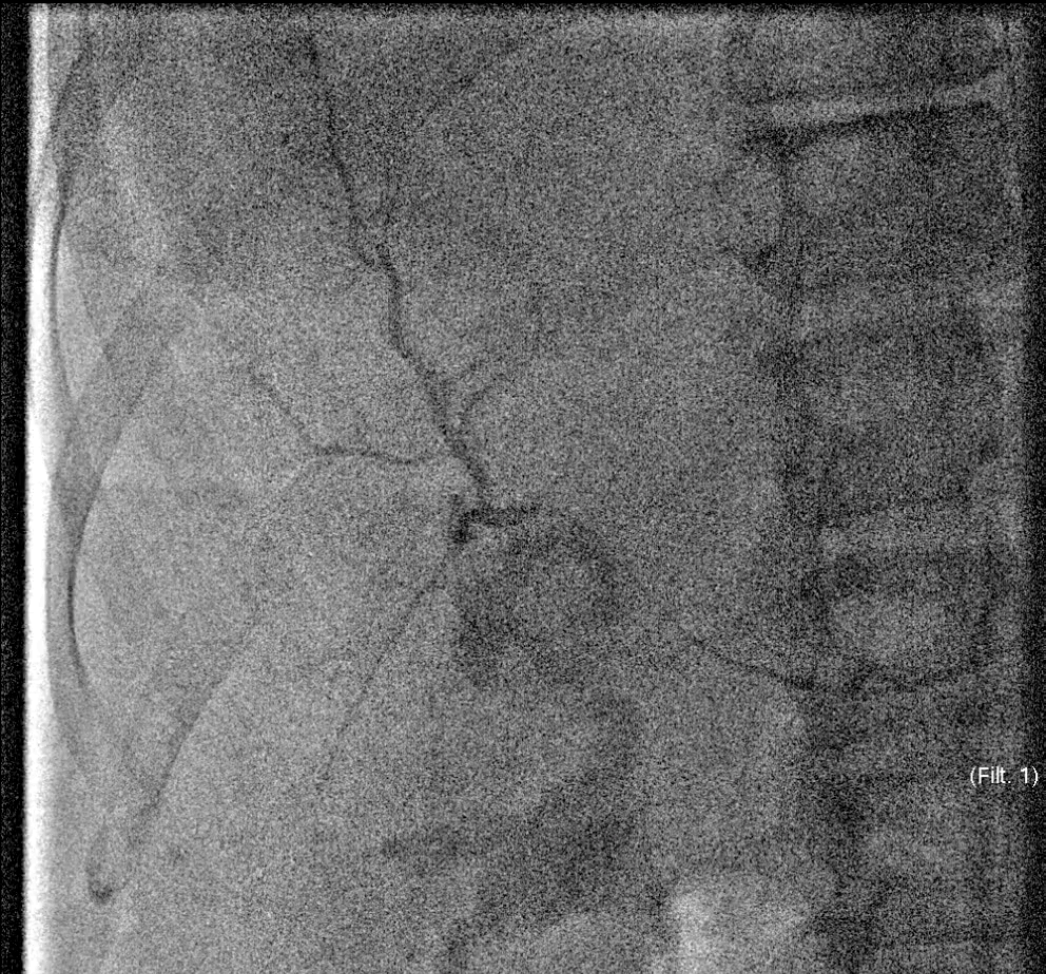
#5: Patience & Stasis

Embolize to Stasis



WW:4096WL:2048

(Filt. 2)



(Filt. 1)

WW:256WL:128

Replaced RHA Angiogram Post-Embolization

Early Arterial



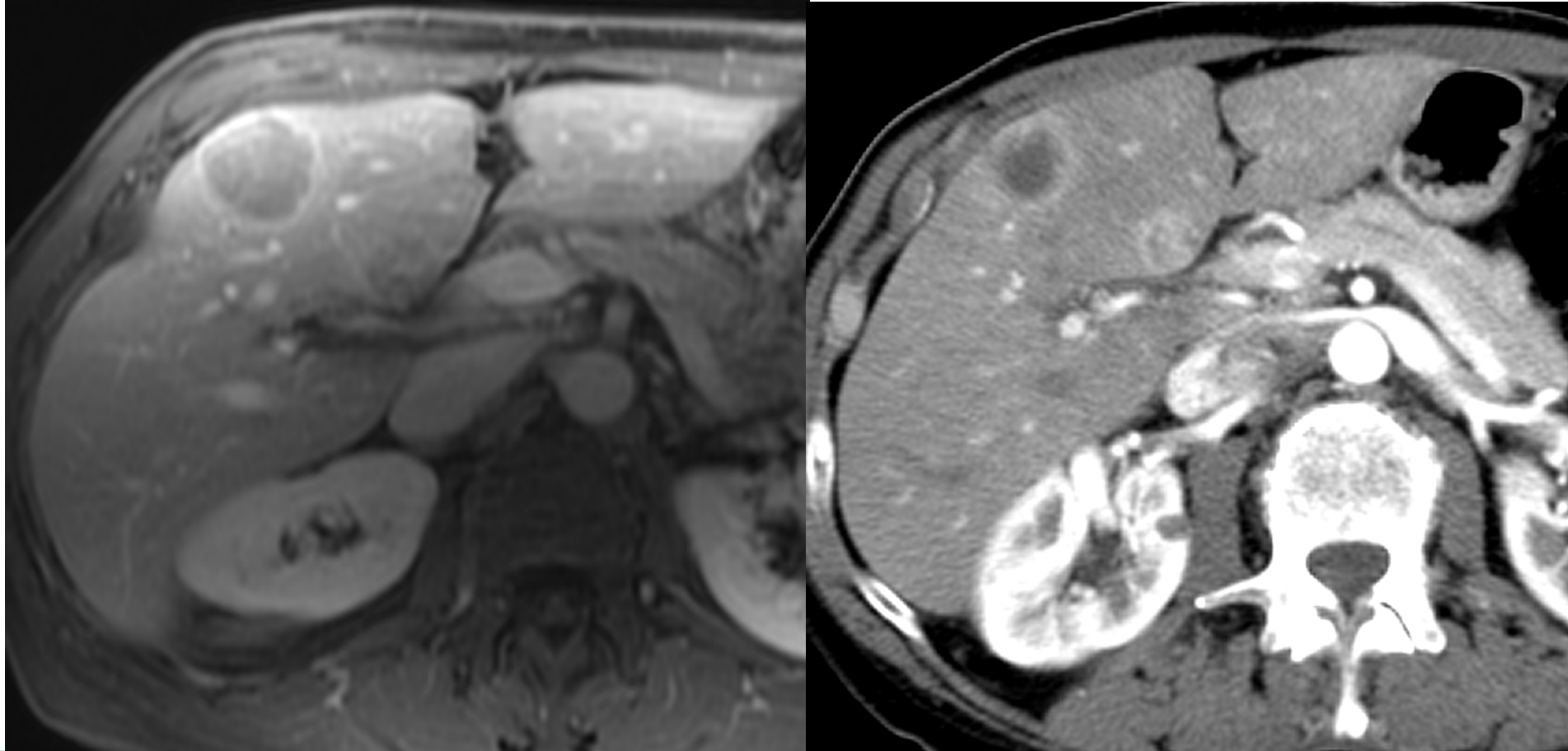
Parenchymal Phase



CT 1 Month After Embolization

MR 10.18.2016

CT 2.24.2017



Take-Home Points

- Small particles
- Stasis
- Immediate post-embo CT
- Biopsy OK after embo
- Ablation
- Dronabinol pre
- General anesthesia
- Steroids, ketorolac
- Dronabinol, ketorolac post-embolization

Thanks!

